

Choral Variations on "Twinkle, twinkle, little star" ♪

キラキラ星変奏曲 Version 2.0.5

- The Life of Jesus Christ sung with theme and 1 + 40 variations -
~ 主題と1+40の変奏で歌い綴るイエス・キリストの足跡 ~

Cont.

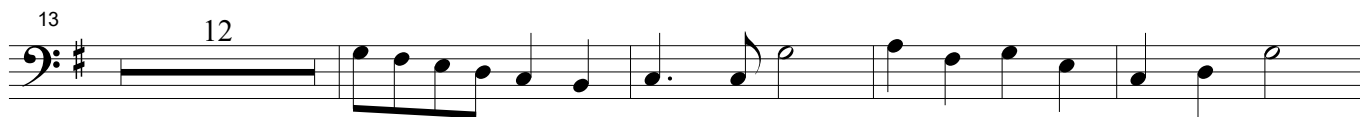
原旋律：フランス民謡
詞/変奏：Shigeharu Matsuo

No.1 Variation-0 小シンフォニア(Sinfonia)

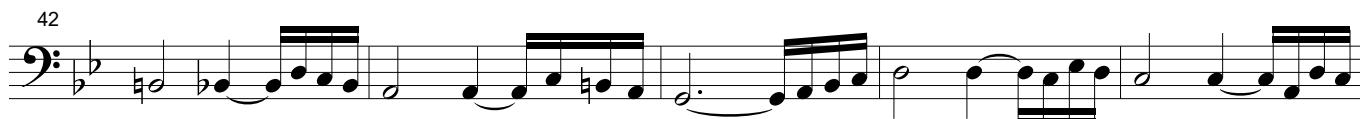
Theme(0,0) in B

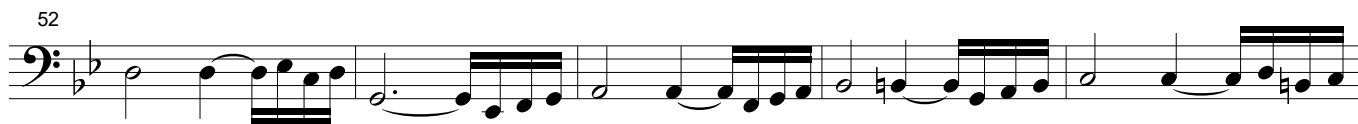


No.2 Theme 星を見上げて

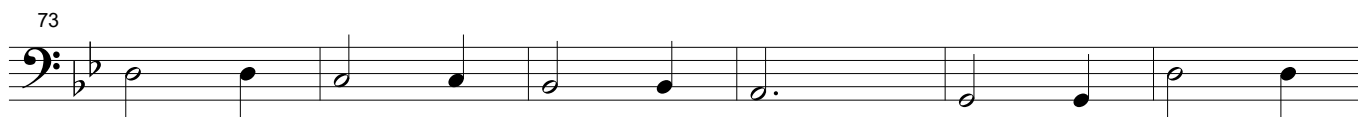


No.3 Variation-1 大いなる光





No.4 Variation-2 待降のキャロル



No.5 Variation-3 みつかい告げる(受胎告知)



89

Musical notation for measure 89, starting with a bass clef and a key signature of one sharp (F#). The measure contains a series of eighth and sixteenth notes.

93

Musical notation for measure 93, starting with a bass clef and a key signature of one sharp (F#). The measure contains a series of eighth and sixteenth notes.

97

Musical notation for measure 97, starting with a bass clef and a key signature of one sharp (F#). The measure contains a series of eighth and sixteenth notes.

101

Musical notation for measure 101, starting with a bass clef and a key signature of one sharp (F#). The measure contains a series of eighth and sixteenth notes.

105

Musical notation for measure 105, starting with a bass clef and a key signature of one sharp (F#). The measure contains a series of eighth and sixteenth notes.

109

Musical notation for measure 109, starting with a bass clef and a key signature of one sharp (F#). The measure contains a series of eighth and sixteenth notes.

113

Musical notation for measure 113, starting with a bass clef and a key signature of one sharp (F#). The measure contains a series of eighth and sixteenth notes.

117

Musical notation for measure 117, starting with a bass clef and a key signature of one sharp (F#). The measure contains a series of eighth and sixteenth notes.

121



No.6 Variation-4 マリアの讃歌 (Magnificat)

125



133



141



149



157

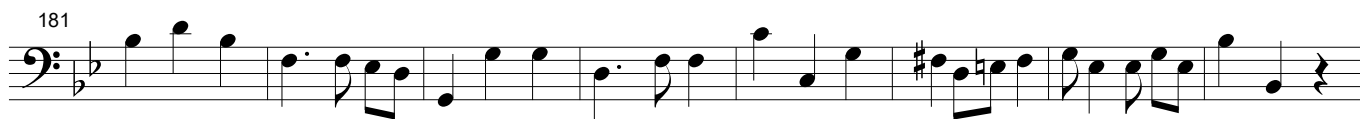


165



173





237

243

249

255

261

269

277

285

No.7 Variation-5 ベツレヘムへの旅路

Theme(0,0) in T

289



294



299



304

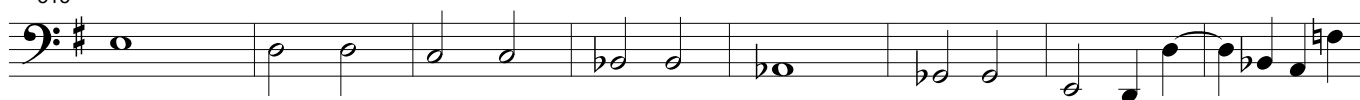


310

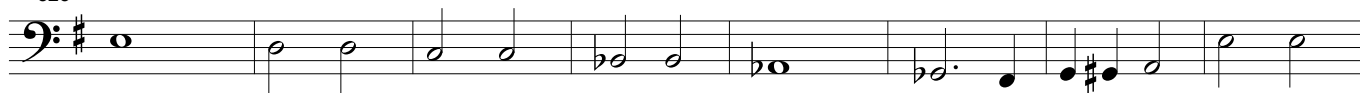


No.8 Variation-6 ベツレヘムの馬小屋で(イエスの誕生)

315



323



331



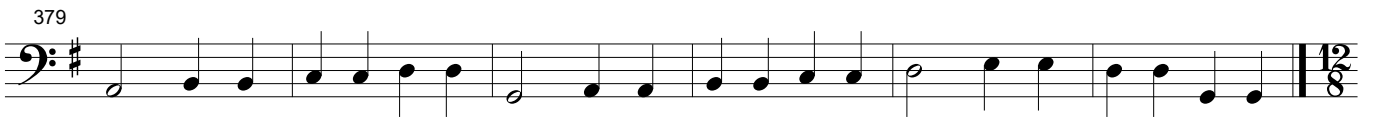


No.9 Variation-7 羊飼いのカノン



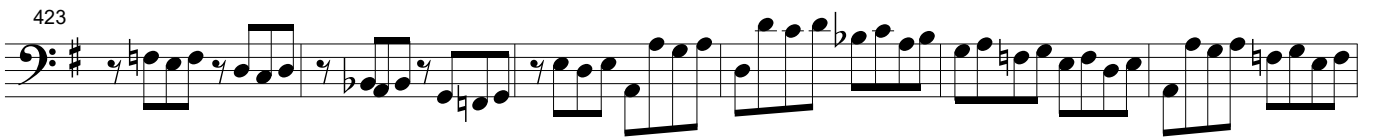
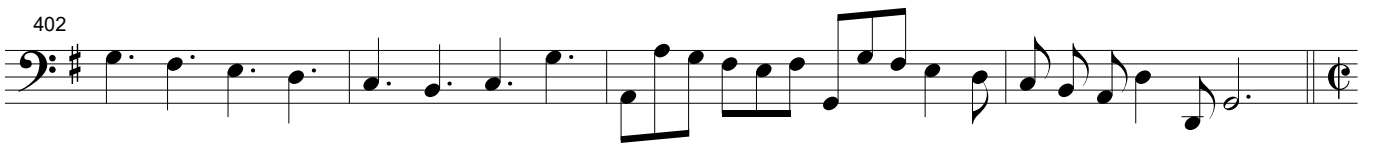
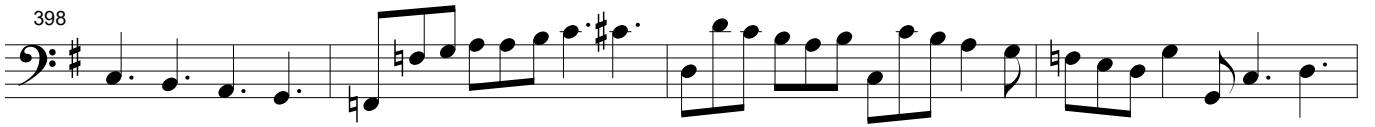
No.10 Variation-8 羊飼いへの良き知らせ

Theme(0,1) in B



No.11 Variation-9 天使の讃美 (Gloria)

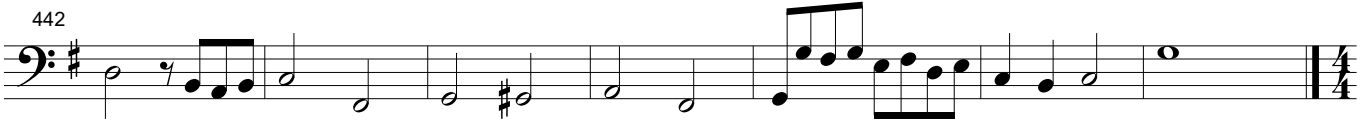




435



442



No.12 Variation-10 馬屋に急げ!

449



453



457



No.13 Variation-11 みどり子イエスの子守歌

461



467



472



No.14 Variation-12 洗礼者ヨハネ

477



481



485



No.15 Variation-13 鳩のように(イエスの洗礼)

489



495



No.16 Variation-14 イエスの弟子

501



507



513



519



No.17 Variation-15 カナの婚礼

525



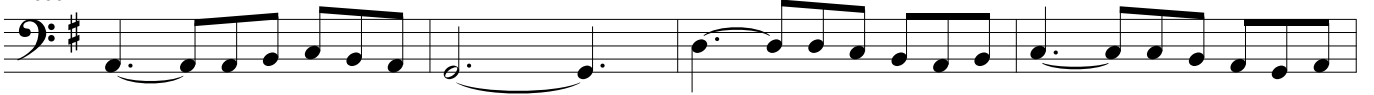
530



535



539



543



547



552



No.18 Variation-16 イエス山に登る

557



565



No.19 Variation-17 山上のイエスの言葉

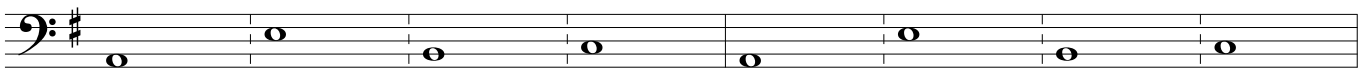
573



581



589



597



No.20 Variation-18 疲れた者、重荷を負うもの

605



612



619



625



631



No.21 Variation-19 イェス湖上を歩く

637



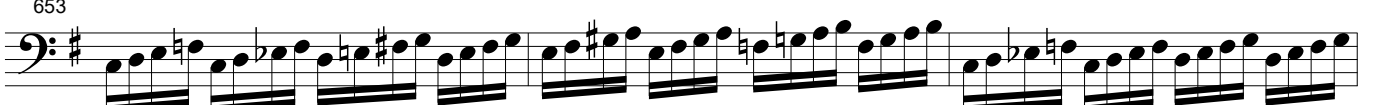
642



645



653

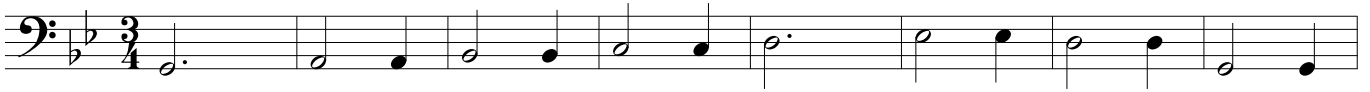


656

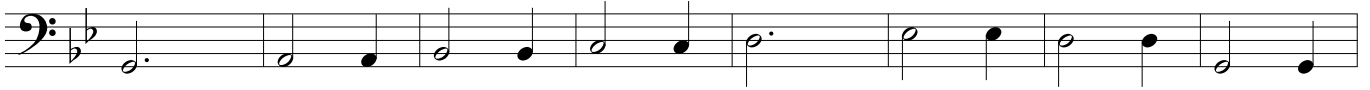


No.22 Variation-20 ラザロの死と甦り

661



669



677



685

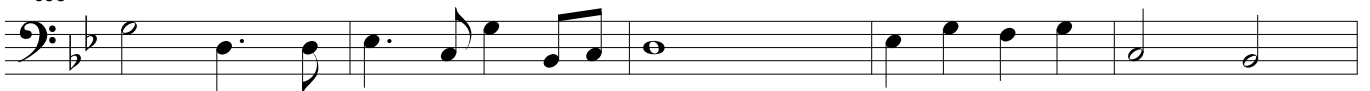


No.23 Variation-21 イエスにすぎる2人のカノタend

693



698



703



No.24 Variation-22 エルサレムに向かうPrelude

707



710

Musical notation for measure 710, featuring a bass clef, a key signature of one flat (B-flat), and a 3/4 time signature. The notation includes a repeat sign and a fermata over the final note.

713

Musical notation for measure 713, featuring a bass clef, a key signature of one flat (B-flat), and a 3/4 time signature. The notation includes a repeat sign and a fermata over the final note.

716

Musical notation for measure 716, featuring a bass clef, a key signature of one flat (B-flat), and a 3/4 time signature. The notation includes a repeat sign and a fermata over the final note.

719

Musical notation for measure 719, featuring a bass clef, a key signature of one flat (B-flat), and a 3/4 time signature. The notation includes a repeat sign and a fermata over the final note.

722

Musical notation for measure 722, featuring a bass clef, a key signature of one flat (B-flat), and a 3/4 time signature. The notation includes a repeat sign and a fermata over the final note.

725

Musical notation for measure 725, featuring a bass clef, a key signature of one flat (B-flat), and a 3/4 time signature. The notation includes a repeat sign and a fermata over the final note.

728

Musical notation for measure 728, featuring a bass clef, a key signature of one flat (B-flat), and a 3/4 time signature. The notation includes a repeat sign and a fermata over the final note.

No.25 Variation-23 ダビデの子、ホサナ

731

Musical notation for measure 731, featuring a bass clef, a key signature of one flat (B-flat), and a 3/4 time signature. The notation includes a repeat sign and a fermata over the final note.

738



745



752

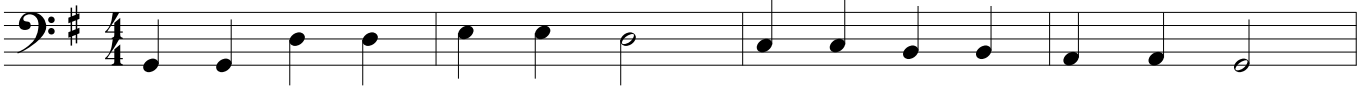


759

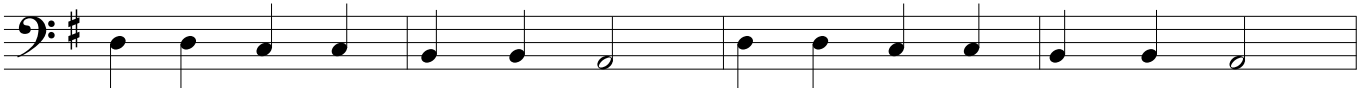


No.26 Variation-24 ヲダの裏切り

763



767



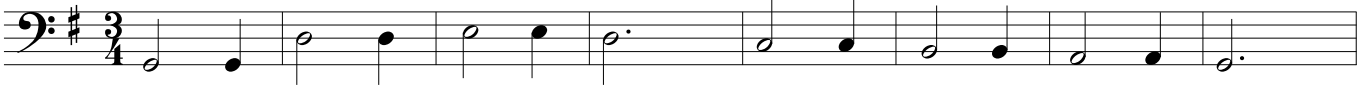
771



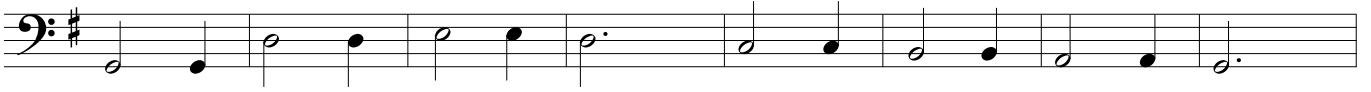
No.27 Variation-25 ゲッセマネの祈り

Theme(1,0) in B

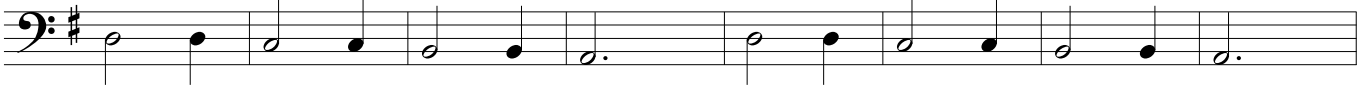
775



783



791



799



No.28 Variation-26 イエス捕われる

807



810



813



816



No.29 Variation-27 大祭司の前で

819



823



827



831



835

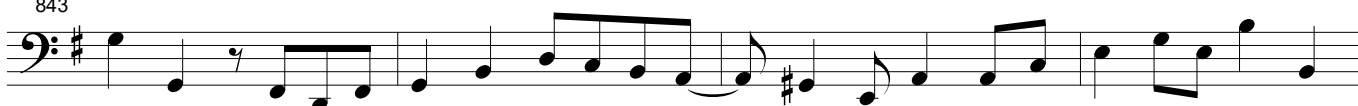


No.30 Variation-28 ペト口に迫る人々のカノン

839



843



847



No.31 Variation-29 ペト口の改悛

852



856



860



864



No.32 Variation-30 シンメトリーなアリア(言葉と音楽の回文)

868



874



No.33 Variation-31 法廷

880



884



888



892



896



900



No.34 Variation-32 猛る群衆のカノン

905



909



913



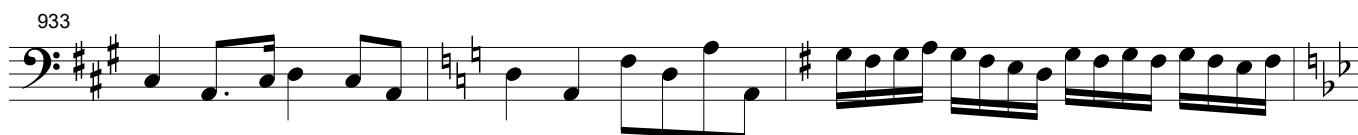
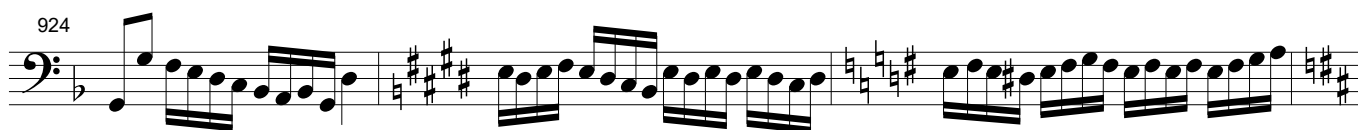
917



No.35 Variation-33 兵士らイエスをなぶり

921





No.36 Variation-34 十字架へのプレリュード

