

Choral Variations on "Twinkle, twinkle, little star" ♪

# キラキラ星変奏曲 Version 2.0.5

- The Life of Jesus Christ sung with theme and 1 + 40 variations -  
~ 主題と1+40の変奏で歌い綴るイエス・キリストの足跡 ~

Cont.

原旋律：フランス民謡  
詞/変奏：Shigeharu Matsuo

## No.1 Variation-0 小シンフォニア(Sinfonia)

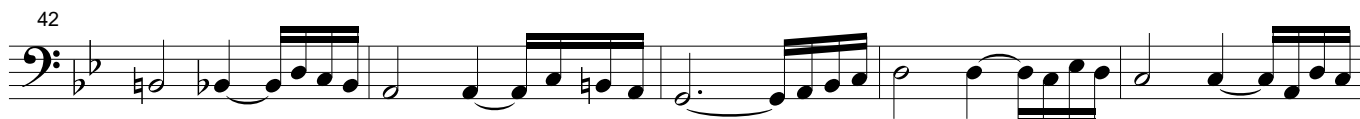
Theme(0,0) in B



## No.2 Theme 星を見上げて

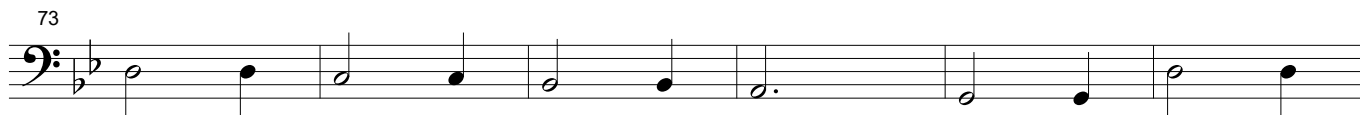
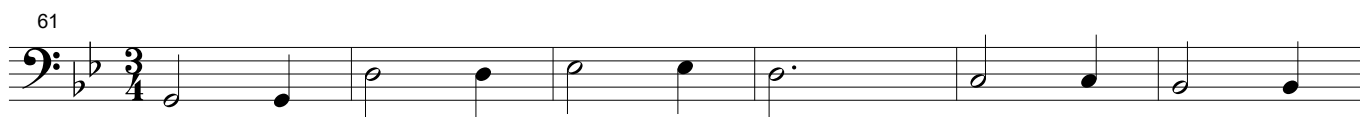


## No.3 Variation-1 大いなる光





### No.4 Variation-2 待降のキャロル



### No.5 Variation-3 みつかい告げる(受胎告知)



89

93

97

101

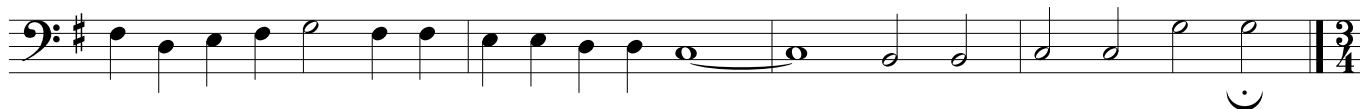
105

109

113

117

121



## No.6 Variation-4 マリアの讃歌 (Magnificat)

125



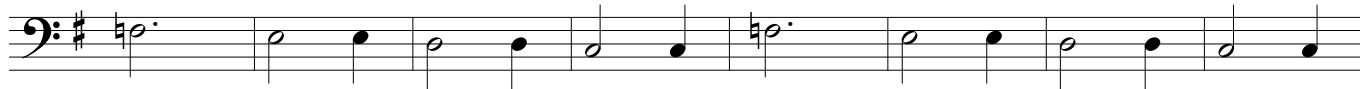
133



141



149



157



165



173





237

243

249

255

261

269

277

285

## No.7 Variation-5 ベツレヘムへの旅路

Theme(0,0) in T

289



294



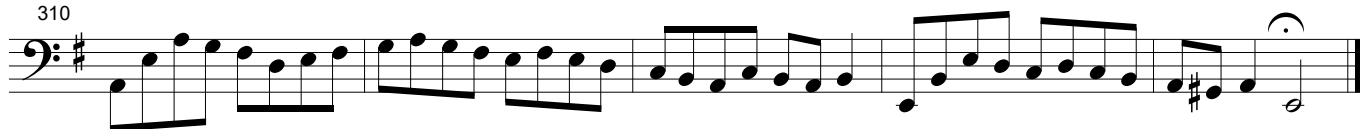
299



304



310

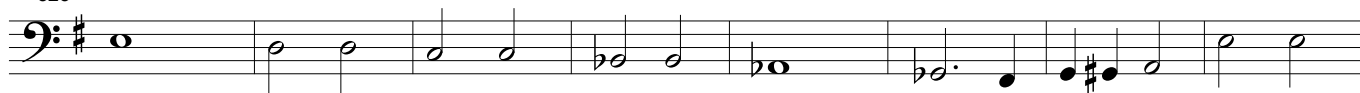


## No.8 Variation-6 ベツレヘムの馬小屋で(イエスの誕生)

315



323



331



340

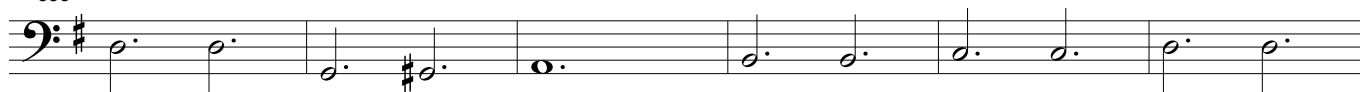


## No.9 Variation-7 羊飼いのカノン

349



355



361



367



## No.10 Variation-8 羊飼いへの良き知らせ

Theme(0,1) in B

373



379

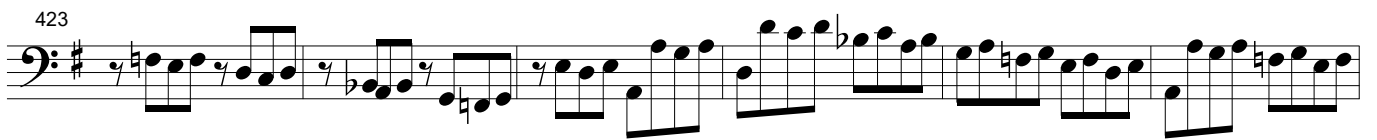
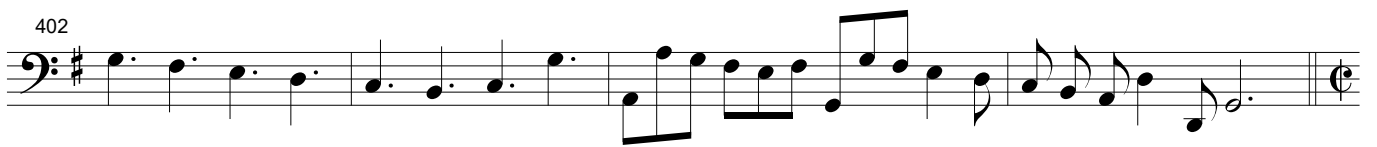
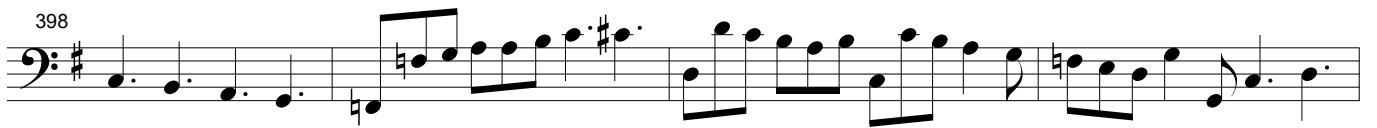


## No.11 Variation-9 天使の讃美 (Gloria)

385







435



442



## No.12 Variation-10 馬屋に急げ!

449



453



457



## No.13 Variation-11 みどり子イエスの子守歌

461



467



472



### No.14 Variation-12 洗礼者ヨハネ

477



481



485



### No.15 Variation-13 鳩のように(イエスの洗礼)

489



495



### No.16 Variation-14 イエスの弟子

501



507



513



519



No.17 Variation-15 カナの婚礼

525



530



535



539



543



547



552



## No.18 Variation-16 イエス山に登る

557



565



## No.19 Variation-17 山上のイエスの言葉

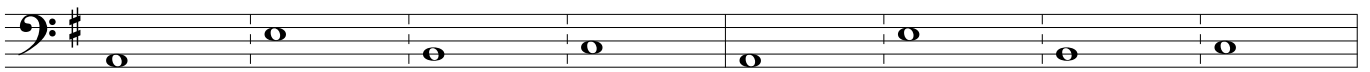
573



581



589



597



## No.20 Variation-18 疲れた者、重荷を負うもの

605



612



619



625



631



## No.21 Variation-19 イェス湖上を歩く

637



642



645



653

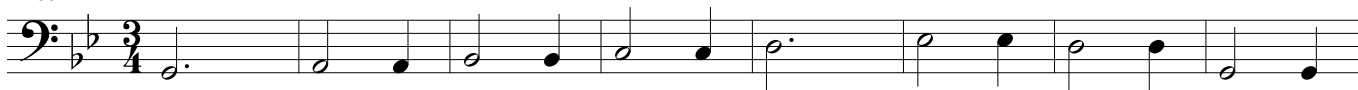


656



## No.22 Variation-20 ラザロの死と甦り

661



669



677



685

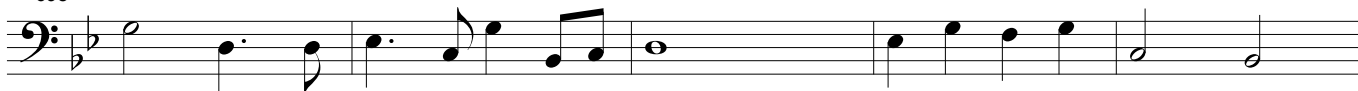


## No.23 Variation-21 イエスにすぎる2人のカノタend

693



698



703



## No.24 Variation-22 エルサレムに向かうPrelude

707



710

713

716

719

722

725

728

No.25 Variation-23 ダビデの子、ホサナ

731



738



745



752

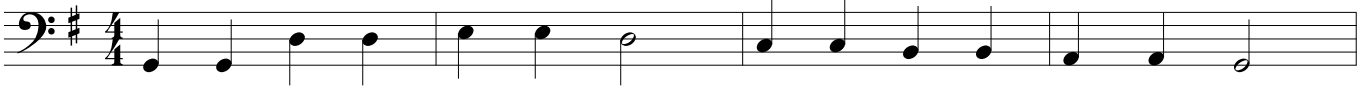


759

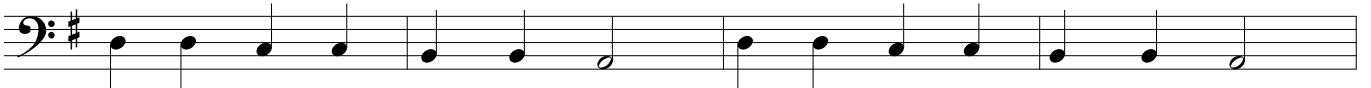


## No.26 Variation-24 ヲダの裏切り

763



767



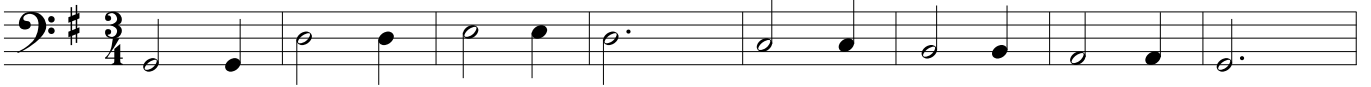
771



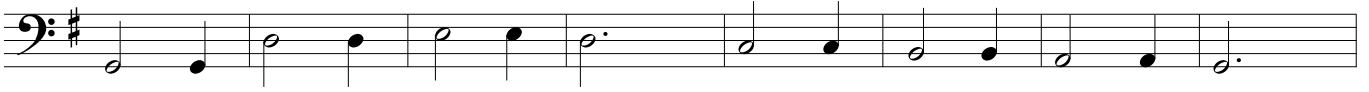
## No.27 Variation-25 ゲッセマネの祈り

Theme(1,0) in B

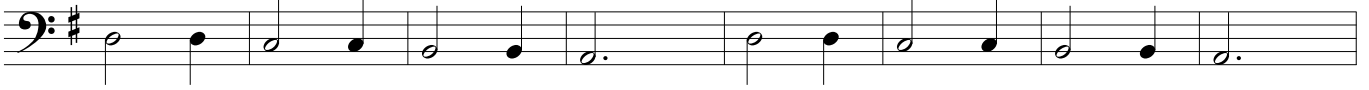
775



783



791



799



## No.28 Variation-26 イエス捕われる

807



810



813



816



## No.29 Variation-27 大祭司の前で

819



823



827



831



835

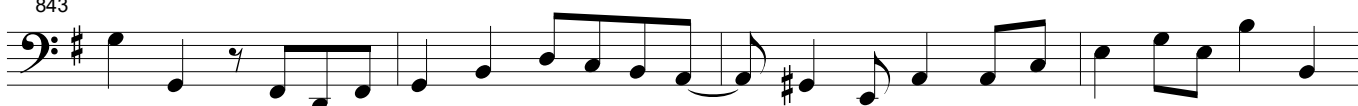


## No.30 Variation-28 ペト口に迫る人々のカノン

839



843



847



## No.31 Variation-29 ペト口の改悛

852



856



860



864



## No.32 Variation-30 シンメトリーなアリア(言葉と音楽の回文)

868



874



## No.33 Variation-31 法廷

880



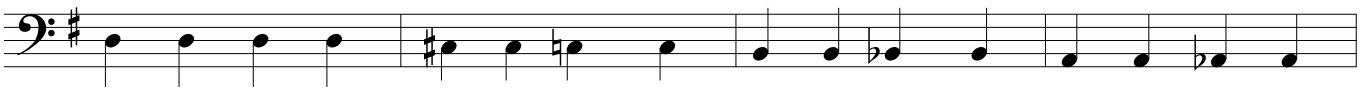
884



888



892



896



900



### No.34 Variation-32 猛る群衆のカノン

905



909



913



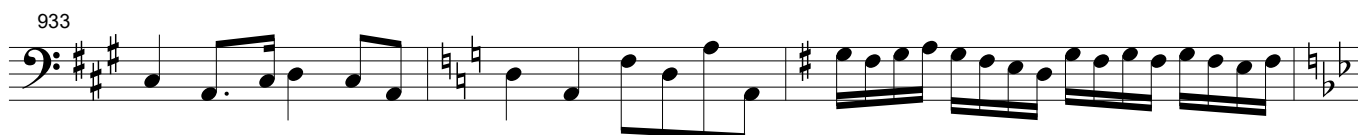
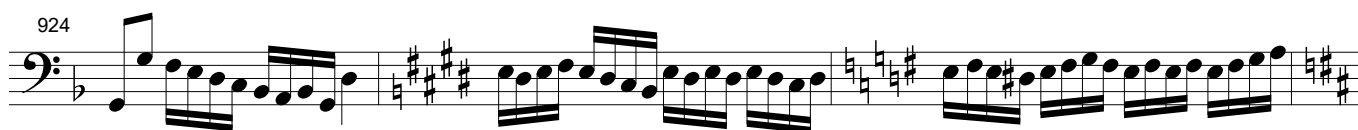
917



### No.35 Variation-33 兵士らイエスをなぶり

921





### No.36 Variation-34 十字架へのプレリュード

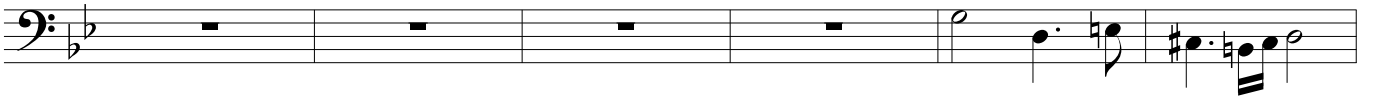


956



No.37 Variation-35 十字架のフーガ

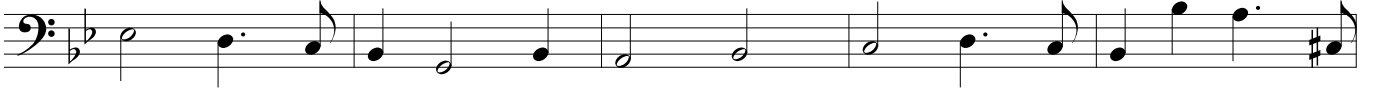
962



968



973



978



983



987



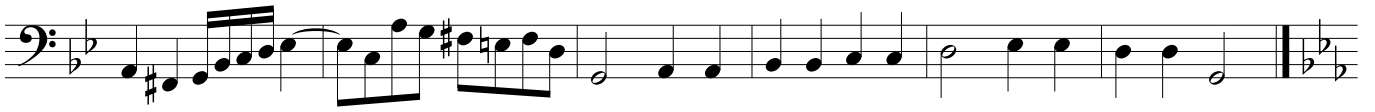
990



994

A musical score for a bass clef instrument, consisting of eight staves of music. The score is written in a key signature of one flat (B-flat major or D minor) and a common time signature. The notation includes various rhythmic values such as quarter notes, eighth notes, and sixteenth notes, along with rests and accidentals. The piece begins with a few measures of rest, followed by a melodic line that develops through the subsequent staves. The final staff concludes with a series of notes and rests.

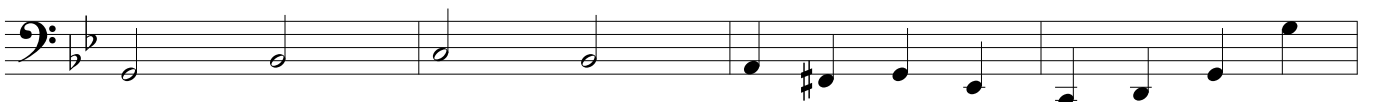
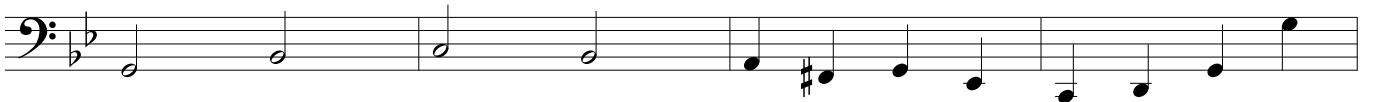




No.38 Variation-36 イエスの死



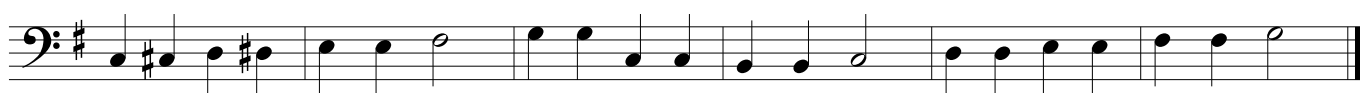
No.39 Variation-37 神の子羊(Agnus Dei)



## No.40 Variation-38 イエスの墓で



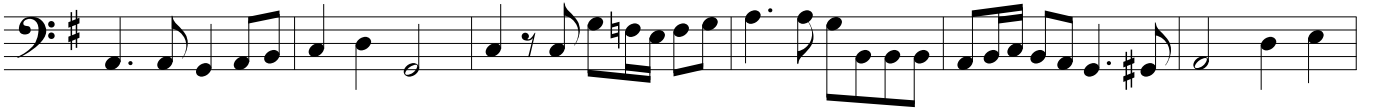
## No.41 Variation-39 復活のプレリュード (Prelude)



## No.42 Variation-40 復活のフーガ



The image displays a musical score for bass clef instruments, likely a cello or double bass, in G major (one sharp). The score is organized into eight horizontal staves. The first staff begins with a treble clef and a key signature of one sharp (F#), indicating the key of G major. The music features a variety of rhythmic patterns, including eighth and sixteenth notes, and rests. The second staff continues the melodic line with a steady eighth-note rhythm. The third staff introduces a more complex rhythmic structure with sixteenth notes and eighth notes. The fourth staff features a melodic line with a prominent upward slant, suggesting a rising scale or arpeggio. The fifth staff shows a rhythmic pattern with eighth notes and rests. The sixth staff continues with a melodic line featuring eighth notes and rests. The seventh staff has a long rest followed by a melodic phrase. The eighth staff concludes the piece with a melodic line of eighth notes.



No.43 Theme 再び星を見上げて

