

Choral Variations on "Twinkle, twinkle, little star" ♪

キラキラ星変奏曲 Version 2.0.6

- The Life of Jesus Christ sung with theme and 1 + 40 variations -

～ 主題と1+40の変奏で歌い綴るイエス・キリストの足跡 ～

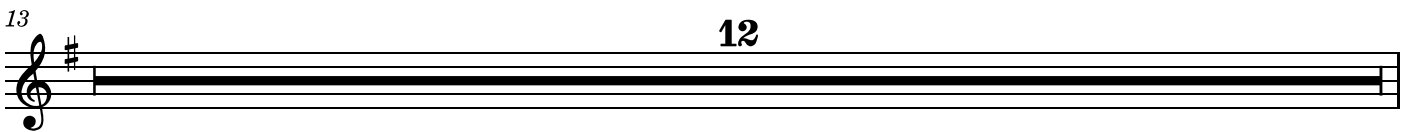
Choir with instrumental music

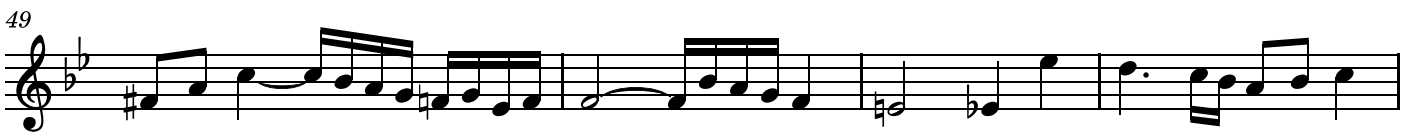
Violin-2

Original melody: French folk song
Lyrics/Variations: Shigeharu Matsuo

No.1 Variation-0 小シンフォニア(Sinfonia)

Theme(0,0) in B







121



123



No.6 Variation-4 マリアの讃歌 (Magnificat)

Theme(0,0)(0,1)(1,0)(1,1) in B and most of other parts

125



131



137



143



149



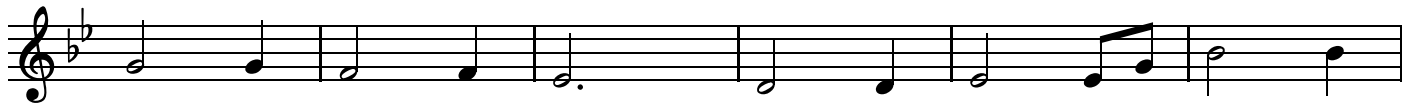
155



161



167







247







321



20

No.9 Variation-7 羊飼いのカノン

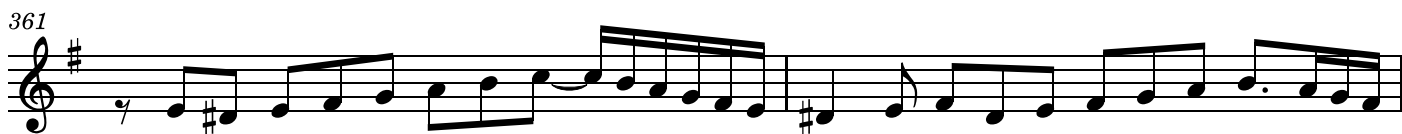
349

Theme(0,1) in B



351





370



No.10 Variation-8 羊飼いへの良き知らせ
Theme(0,1) in B

373





No.11 Variation-9 天使の讚美 (Gloria)
Theme(0,0) in S,A,T,B Theme(1,1) in B



404



415



421





No.12 Variation-10 馬屋に急げ!

Theme(0,0) in S



No.13 Variation-11 みどり子イエスの子守歌

Theme(0,0) in S



465





No.14 Variation-12 洗礼者ヨハネ
Theme(0,0) in T, S (Dorian mode)



No.15 Variation-13 鳩のように(イエスの洗礼)
Theme(0,0) in S



28

501

No.16 Variation-14 イエスの弟子

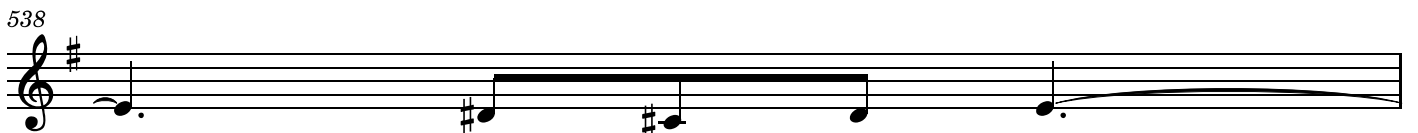
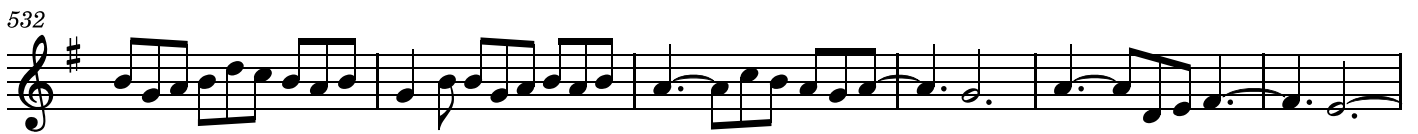
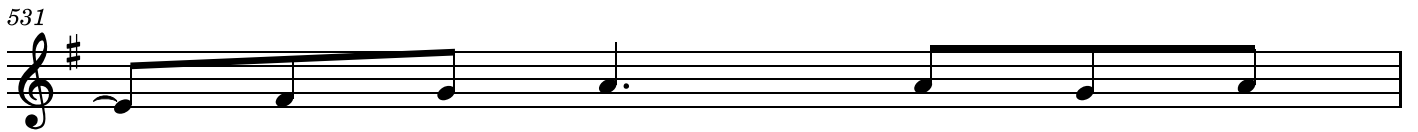
Theme(0,0) in S (Dorian mode)

12

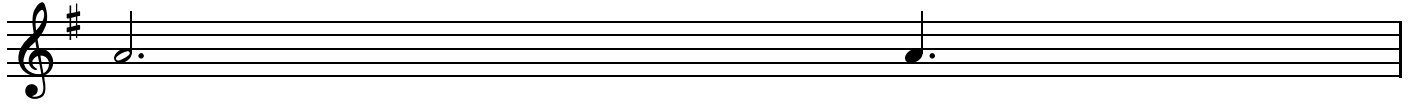




No.17 Variation-15 カナの婚礼



544



545



550



551



No.18 Variation-16 イエス山に登る

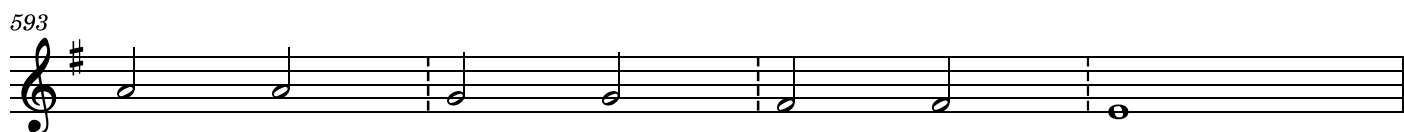
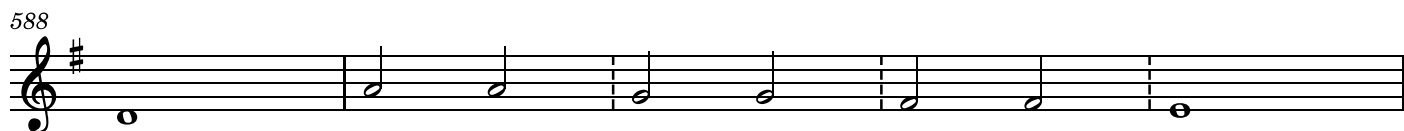
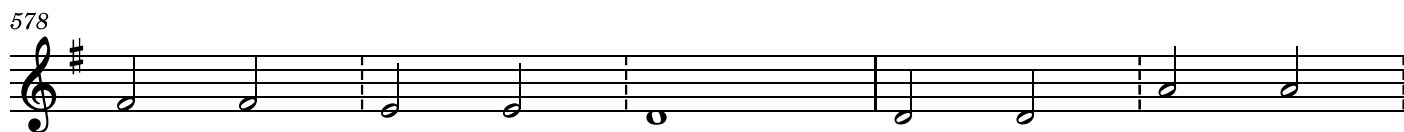
Theme(1,1) in B

557

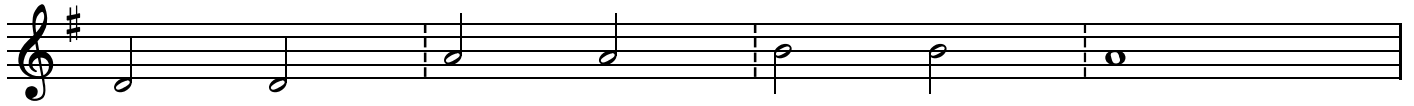




No.19 Variation-17 山上のイエスの言葉
Theme(0,0) in A (Mixolydian mode)



597



601



No.20 Variation-18 疲れた者、重荷を負うもの

605

Theme(0,0) in S, T



613



621



629



No.21 Variation-19 イエス湖上を歩く

637

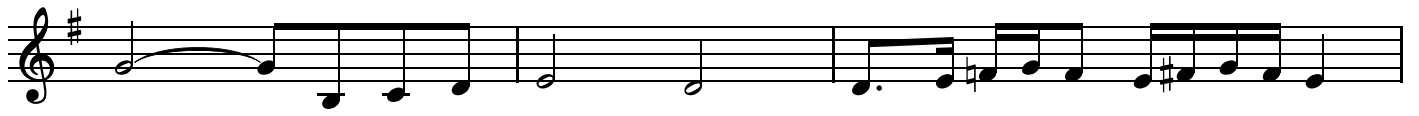
Theme (1,1) in B, Theme (0,0) in T(Compressed, like fractal)



642

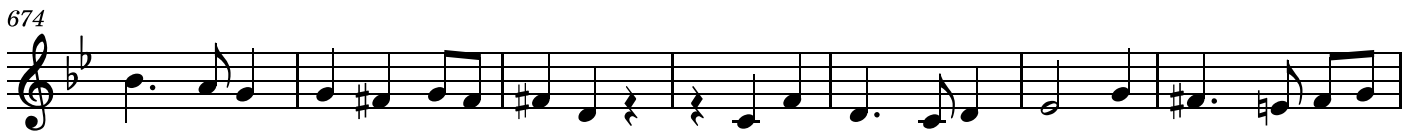


647





No.22 Variation-20 ラザロの死と甦り
Theme(0,1) in B





765



767



769



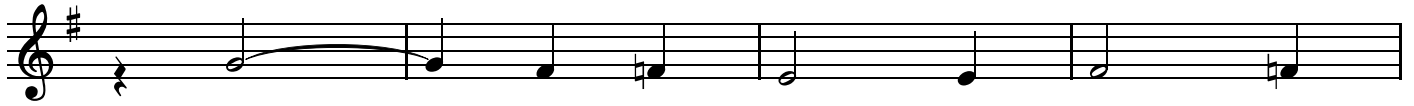


No.27 Variation-25 ゲッセマネの祈り
Theme(1,0) in B



44

799



803



No.28 Variation-26 イエス捕われる

807

Theme(0,0) in S



811



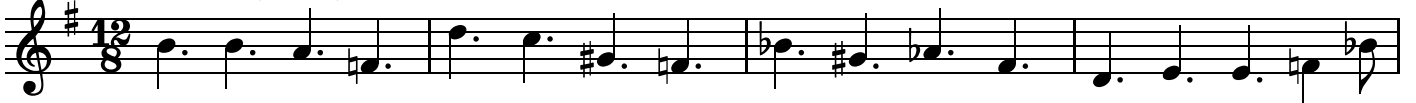
815



No.29 Variation-27 大祭司の前で

819

Theme (0,1) in B, S



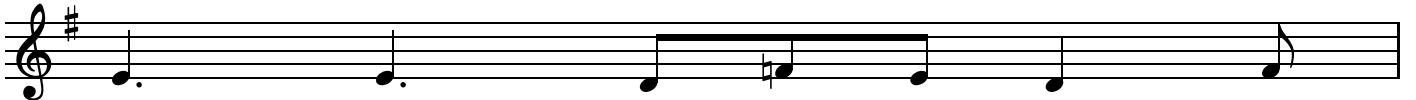
823



825



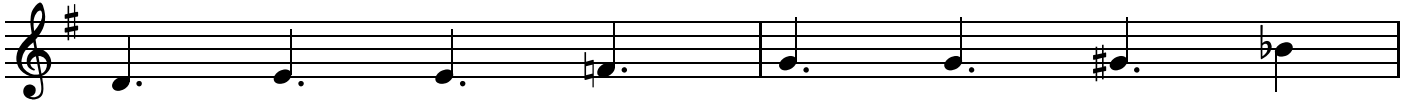
830



831



835



837



No.30 Variation-28 ペト口に迫る人々のカノン
Theme(0,0) in S/A Canon

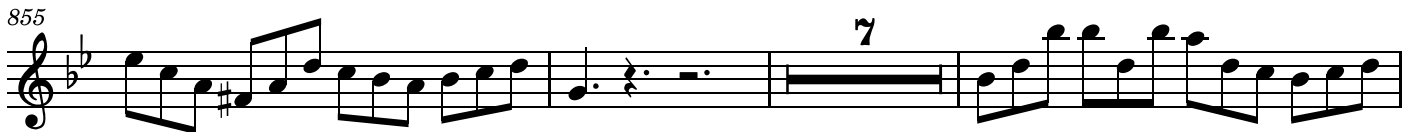
839





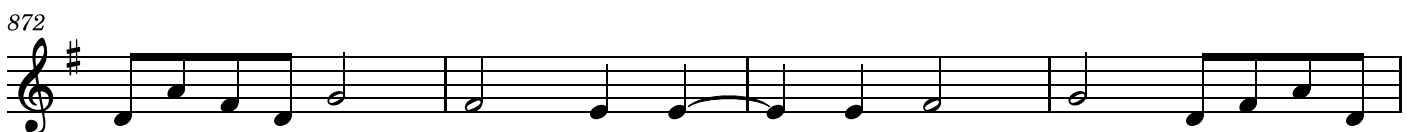
No.31 Variation-29 ペト口の改悛

Theme(0,0) in T



No.32 Variation-30 シンメトリーなアリア(言葉と音楽の回文)

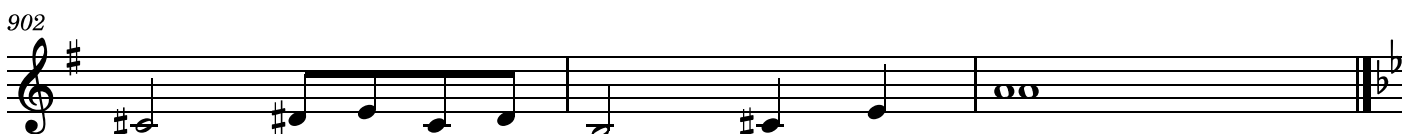
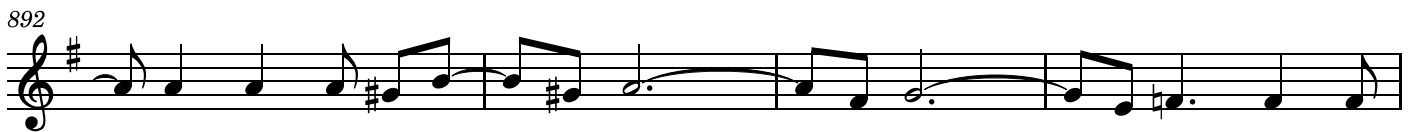
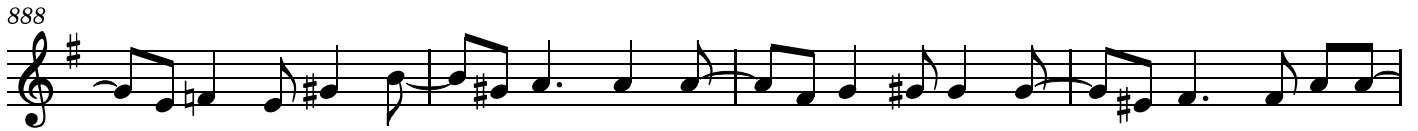
Theme(0,0)(0,1) in S and Theme(1,1)(1,0) in B





No.33 Variation-31 法廷

Theme(0,0) in B



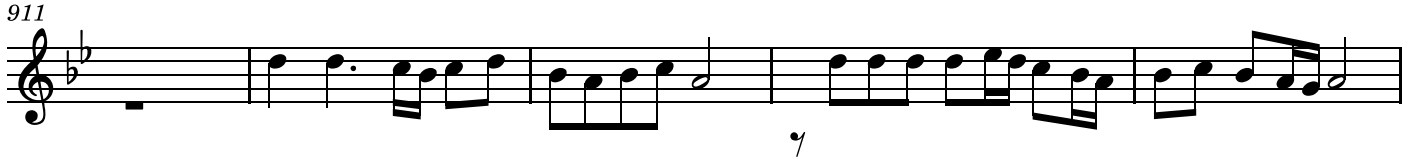
50

No.34 Variation-32 猛る群衆のカノン

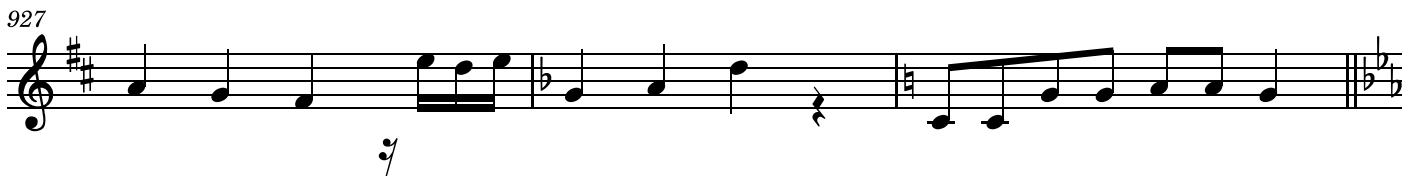
905

Theme(0,0) in S, A, T/B

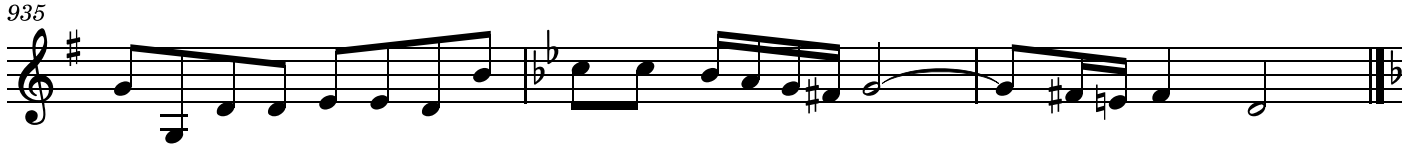




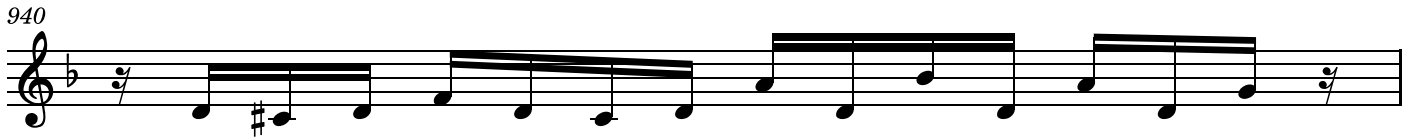
No.35 Variation-33 兵士らイエスをなぶり







No.36 Variation-34 十字架へのプレリュード
Theme(1,1) in B



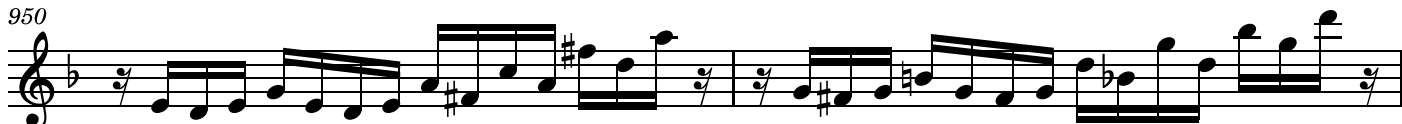
947



949



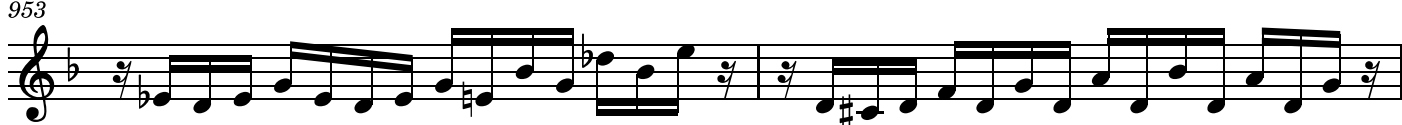
950



952



953



955

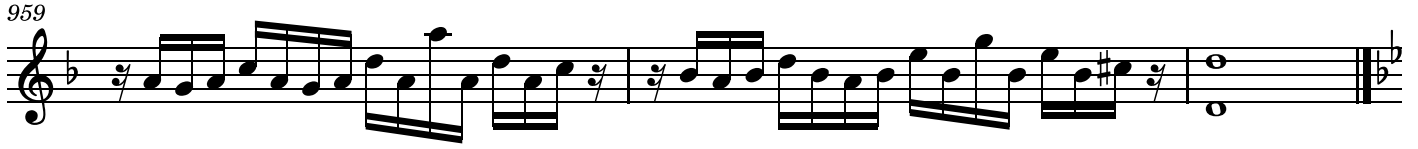


956

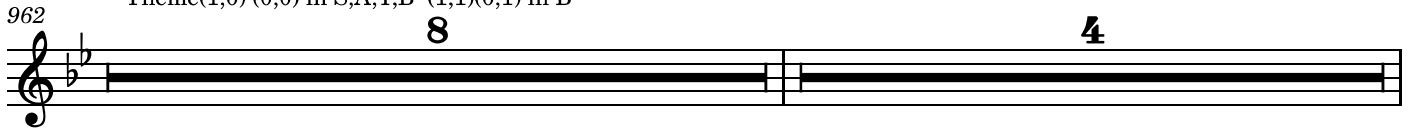


958





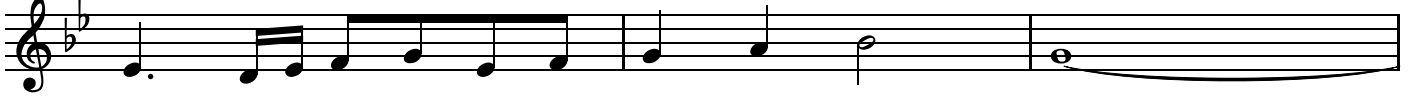
No.37 Variation-35 十字架のフーガ
Theme(1,0) (0,0) in S,A,T,B (1,1)(0,1) in B



1001



1004



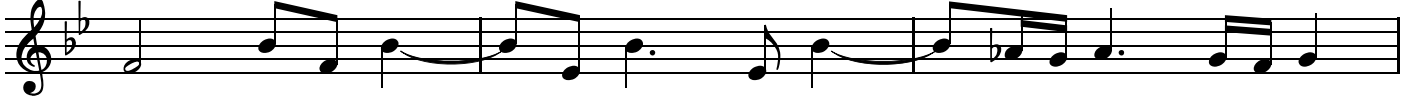
1007



1011



1015



1018



1022



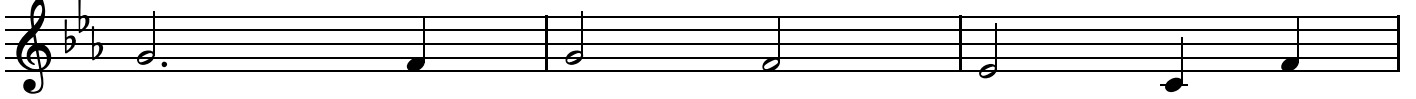
1052



1055



1058



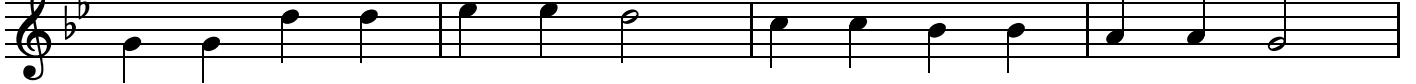
1061



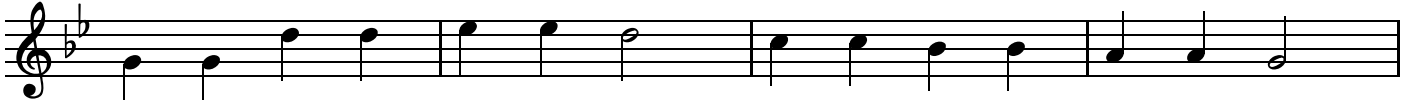
1064

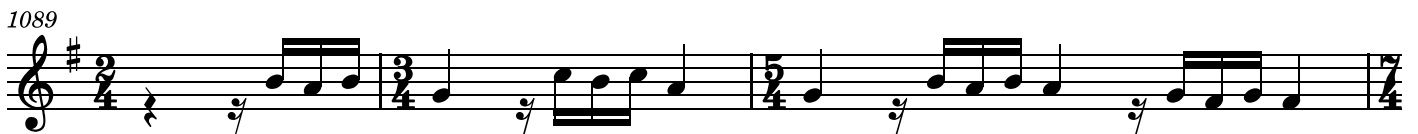


1065 **No.39 Variation-37** 神の子羊(Agnus Dei)
Theme(0,0) in A-S



1069

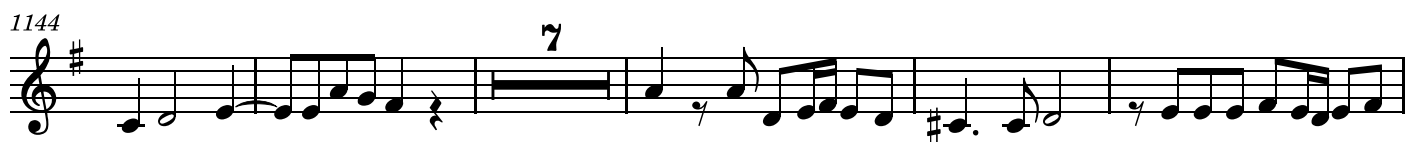






1124





1160

1164

1168

1173

1177

1181

1185

1194



1198



1202



1206



1211



1215



No.43 Theme 再び星を見上げて
Theme(0,0) in S Theme(1,1) in B

1219



1223



