

Choral Variations on "Twinkle, twinkle, little star" ♪

キラキラ星変奏曲 Version 2.0.6

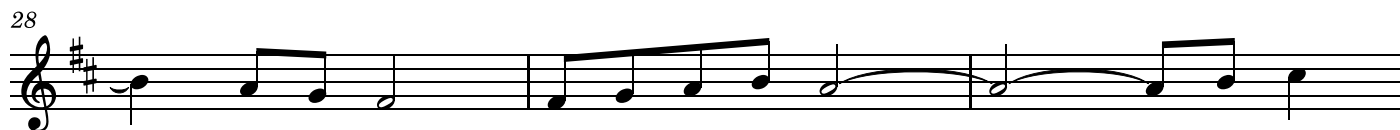
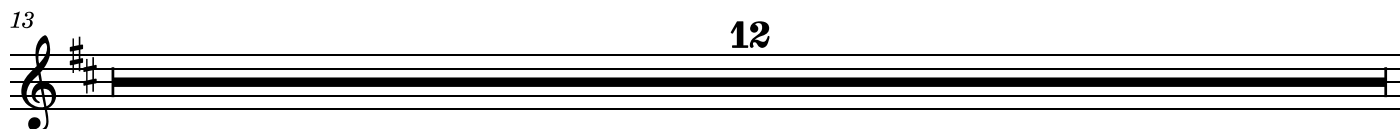
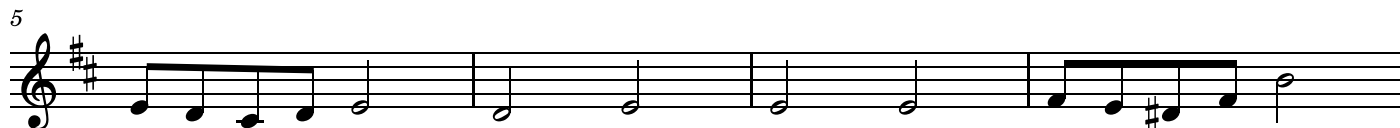
English-horn

No.1 Variation-0 小シンフォニア(Sinfonia)

Theme(0,0) in B

Original melody: F French folk song

Lyrics/Variations: FShigeharu Matsuo



No.3 Variation-1 大いなる光

37

Theme(0,0)(0,1) in B



41



53



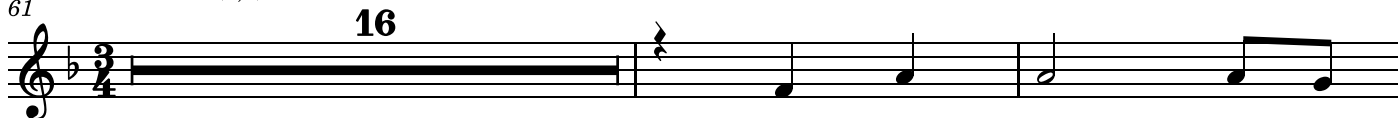
57



No.4 Variation-2 待降のキャロル

61

Theme(0,0) in B



79

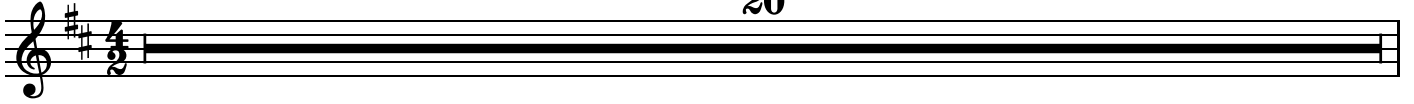


No.5 Variation-3 つかい告げる(受胎告知)

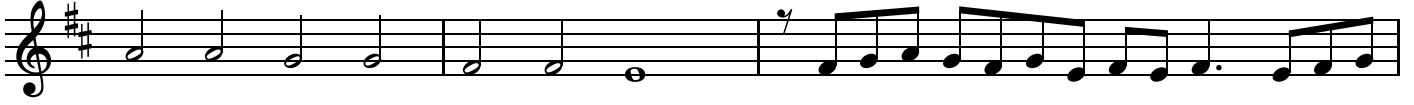
Theme(0,0) in S,A,T,B Theme(1,1) in B

20

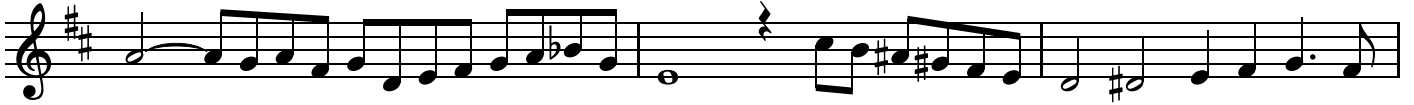
85



105



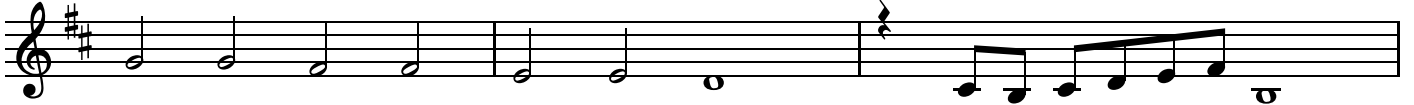
108



111



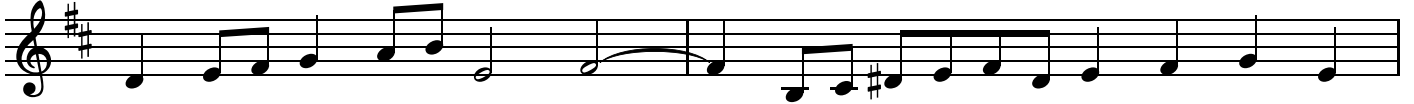
114



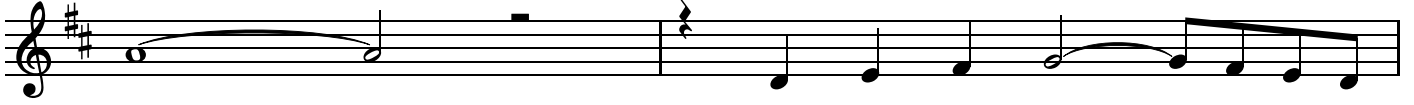
117



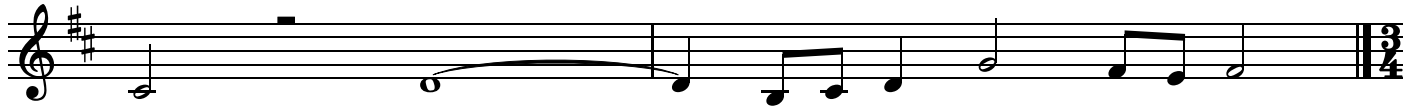
119



121



123



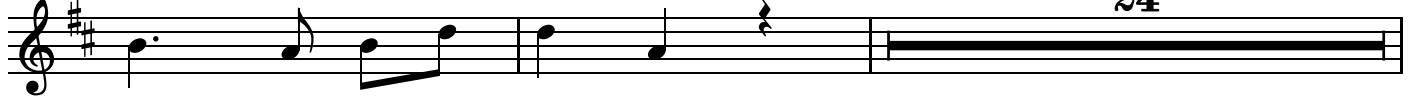
No.6 Variation-4 マリアの讃歌 (Magnificat)

Theme(0,0)(0,1)(1,0)(1,1) in B and most of other parts

125



131



157



162



168



174



180



186



192



198



205



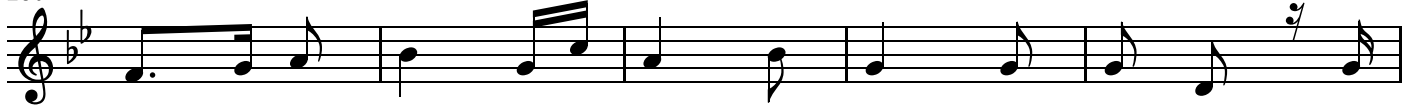
213



225



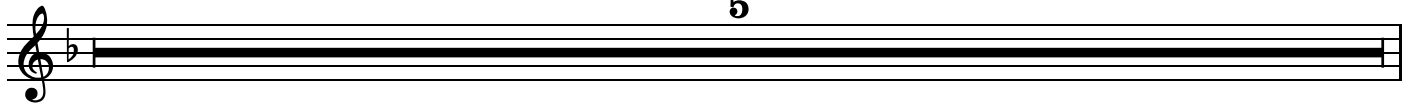
230



235



240

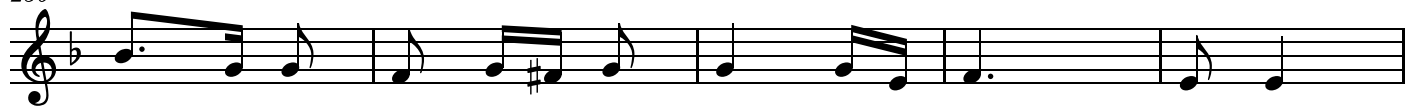


245



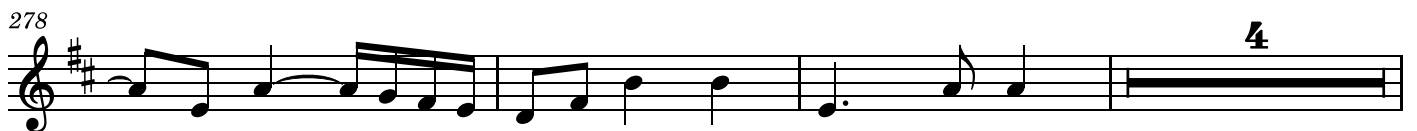
8

250

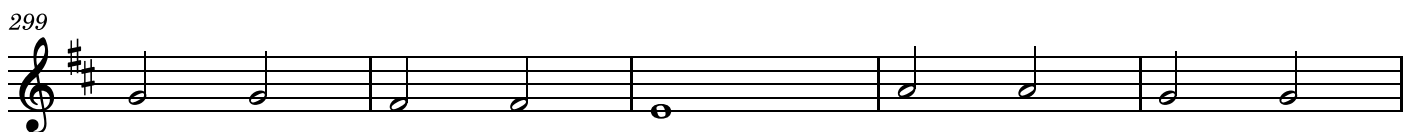
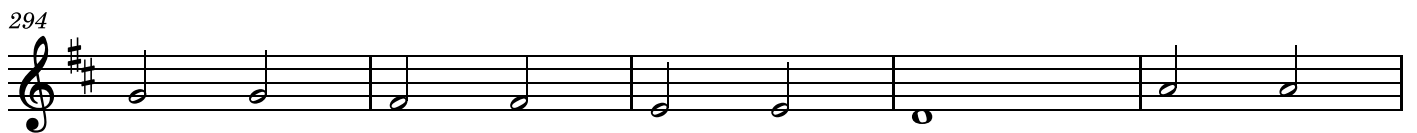


255

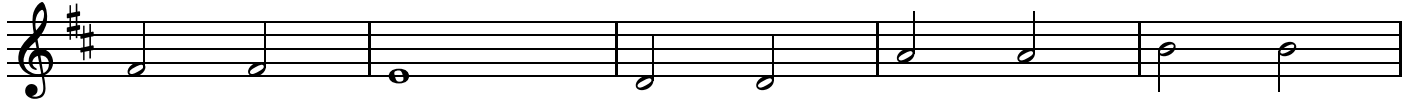




No.7 Variation-5 ベツレヘムへの旅路
Theme(0,0) in T



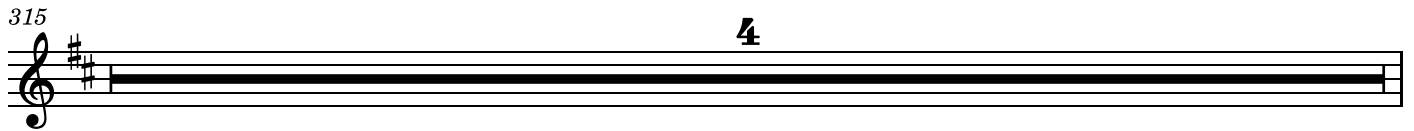
304



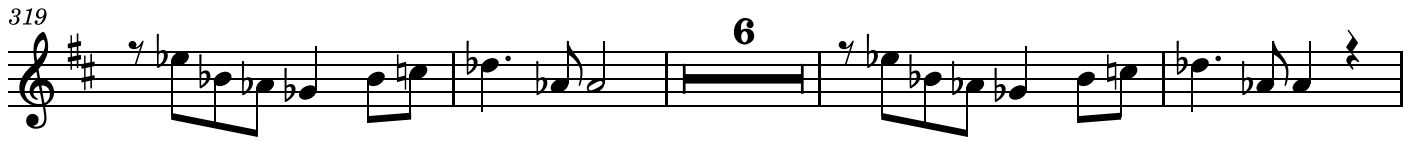
309



315 **4**



319 **6**



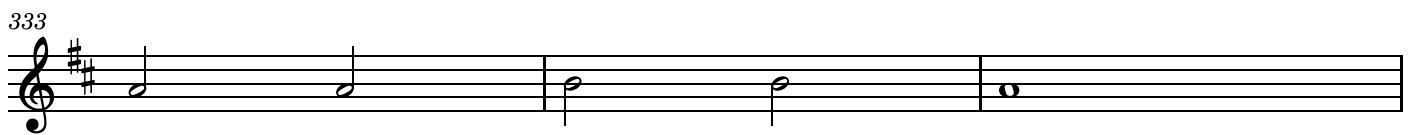
329



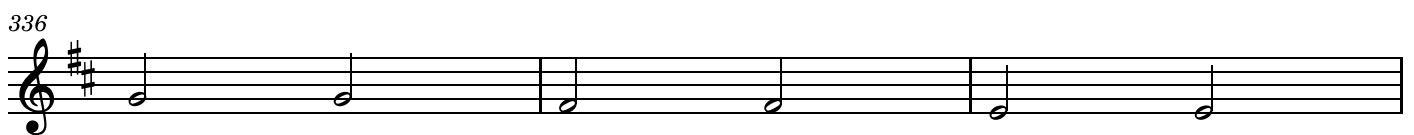
331



333



336



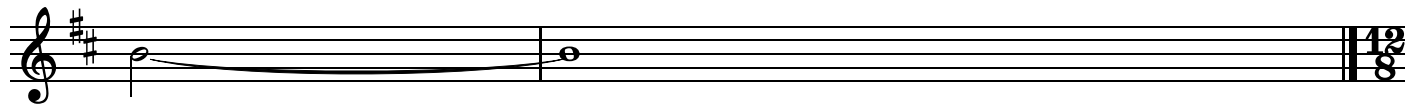
339 **4**



345



347



No.9 Variation-7 羊飼いのカノン

Theme(0,1) in B

349 9

360

362

364

366 4

371

No.10 Variation-8 羊飼いの良き知らせ

Theme(0,1) in B

373

376 4

382



No.11 Variation-9 天使の讃美 (Gloria)

Theme(0,0) in S,A,T,B Theme(1,1) in B

385



389



393



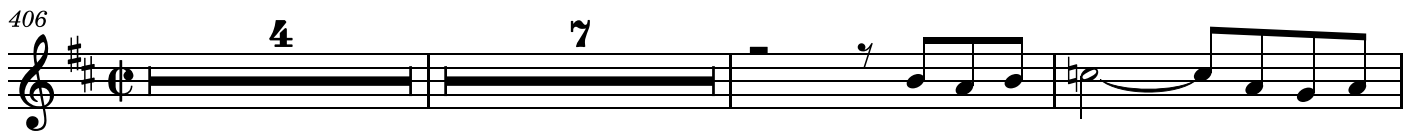
398



402



406



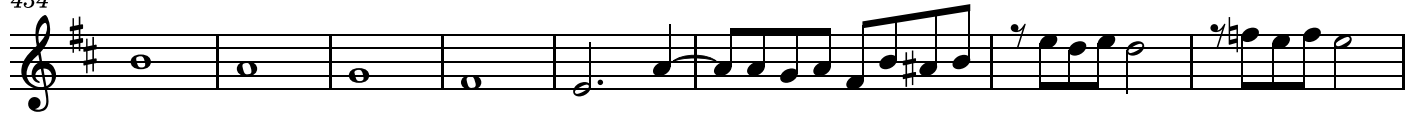
419



426



434



442



No.12 Variation-10 馬屋に急げ!

449

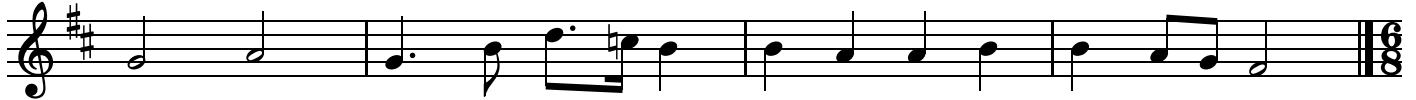
Theme(0,0) in S



453



457



No.13 Variation-11 みどり子イエスの子守歌

461

Theme(0,0) in S



465



469



473



No.14 Variation-12 洗礼者ヨハネ

477

Theme(0,0) in T, S (Dorian mode)



481



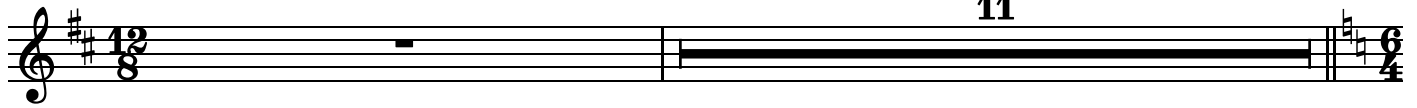
485



No.15 Variation-13 鳩のように(イエスの洗礼)

Theme(0,0) in S

489



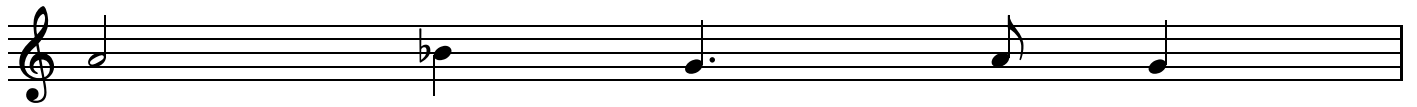
No.16 Variation-14 イエスの弟子

Theme(0,0) in S (Dorian mode)

501



506



507



513

12



No.17 Variation-15 カナの婚礼

Theme(0,0) in B Theme(1,1) in S

525



532



535



541



546



551



No.18 Variation-16 イエス山に登る

Theme(1,1) in B

557

568

No.19 Variation-17 山上のイエスの言葉

Theme(0,0) in A (Mixolydian mode)

573

578

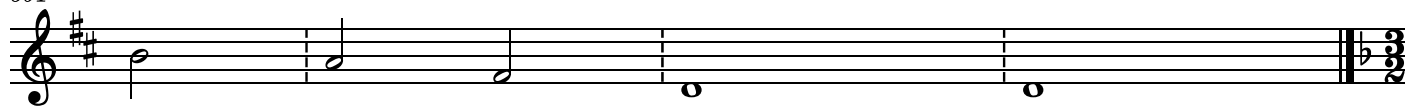
583

588

593

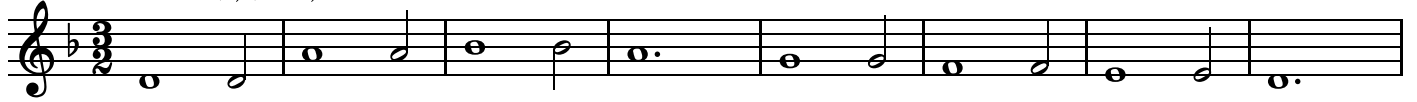
597

601



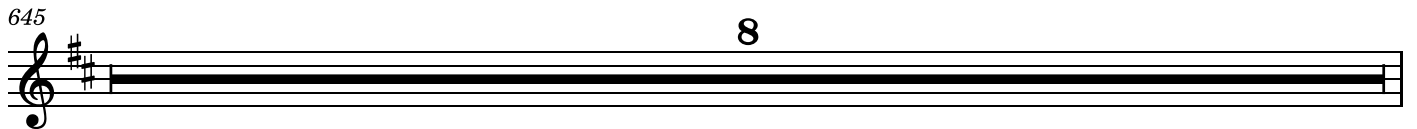
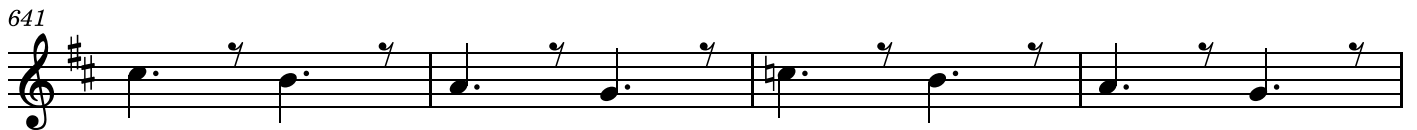
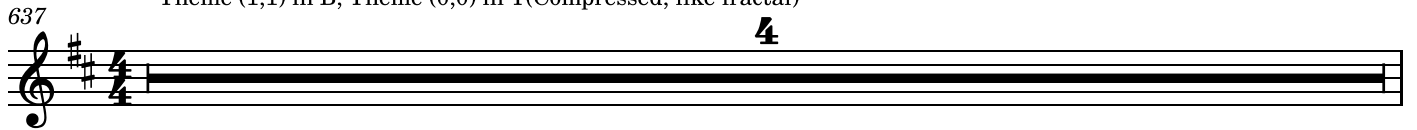
No.20 Variation-18 疲れた者、重荷を負うもの

605 Theme(0,0) in S, T



No.21 Variation-19 イエス湖上を歩く

Theme (1,1) in B, Theme (0,0) in T(Compressed, like fractal)



657



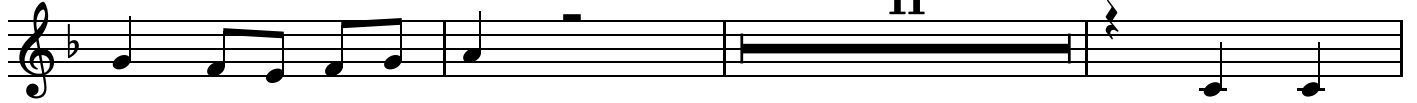
No.22 Variation-20 ラザロの死と甦り

Theme(0,1) in B

661



668



682



688



No.23 Variation-21 イェスにすぎる2人のカノン

Theme(0,0) in S/A Canon

693



696



699



702





No.24 Variation-22 エルサレムに向かうPrelude

Theme (0,0) in B, Theme (1,1) in S

707



712



719



725



No.25 Variation-23 ダビデの子、ホサナ

Theme(0,0) in B,S

731



736



741



746



751



757



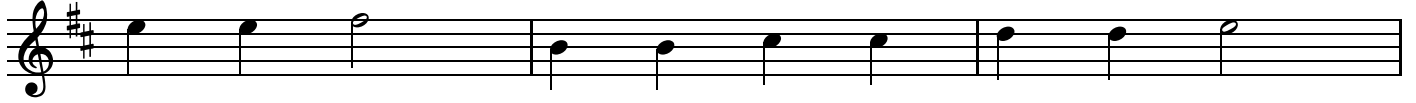
No.26 Variation-24 ヲダの裏切り

Theme(1,0) in S, Theme(0,0) in B

763



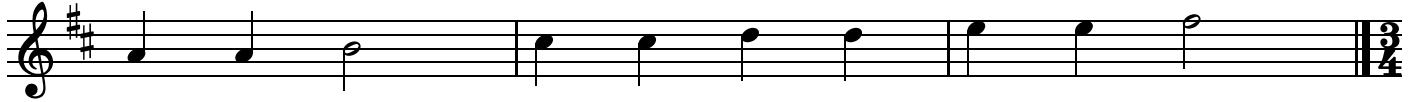
766



769



772



No.27 Variation-25 ゲッセマネの祈り

Theme(1,0) in B

775



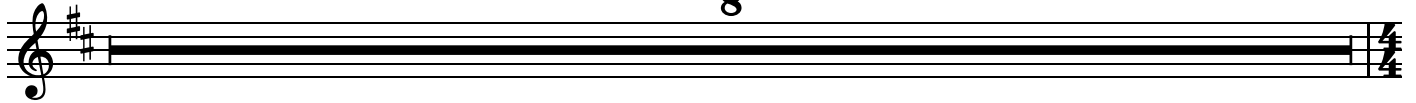
781



793



799



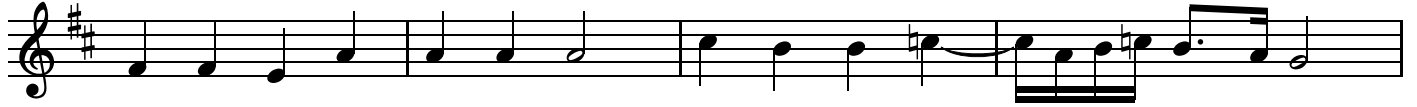
No.28 Variation-26 イエス捕われる

Theme(0,0) in S

807



811



815



No.29 Variation-27 大祭司の前で

Theme (0,1) in B, S

819



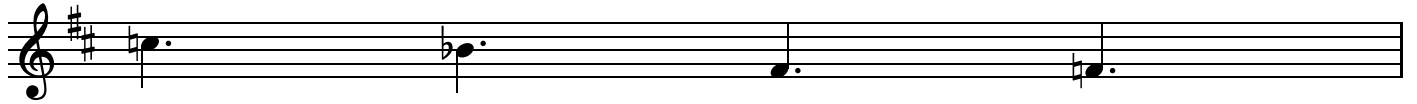
824



829



833



834



838



No.30 Variation-28 ペトロに迫る人々のカノン
Theme(0,0) in S/A Canon

839



844



848



No.31 Variation-29 ペト口の改悛

Theme(0,0) in T

852



12

No.32 Variation-30 シンメトリーなアリア(言葉と音楽の回文)

Theme(0,0)(0,1) in S and Theme(1,1)(1,0) in B

868



874



No.33 Variation-31 法廷

Theme(0,0) in B

880



885



889



893



897



901



No.34 Variation-32 猛る群衆のカノン

905

Theme(0,0) in S, A, T/B



910



916



No.35 Variation-33 兵士らイエスをなぶり

921

Theme(0,0) in S, A, T, B and Tonality change



923



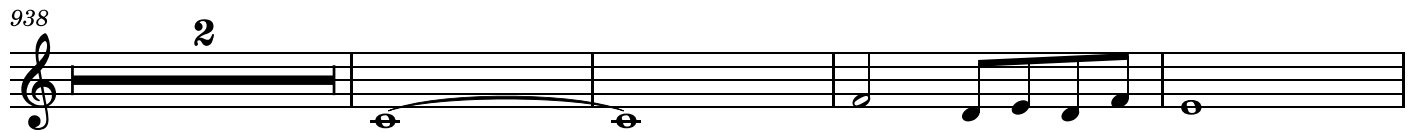
926



928

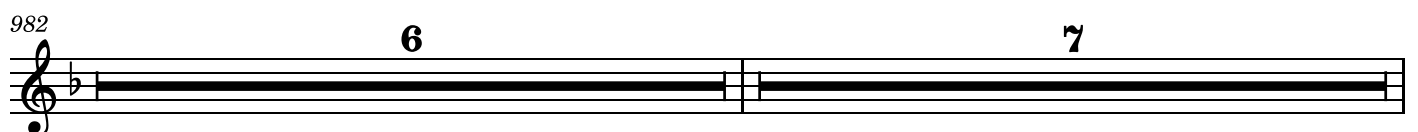






No.37 Variation-35 十字架のフーガ

Theme(1,0) (0,0) in S,A,T,B (1,1)(0,1) in B





38

1043



1044



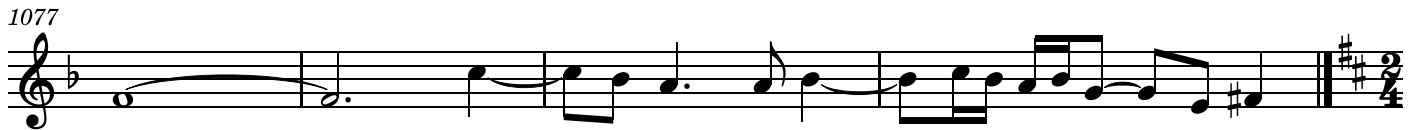
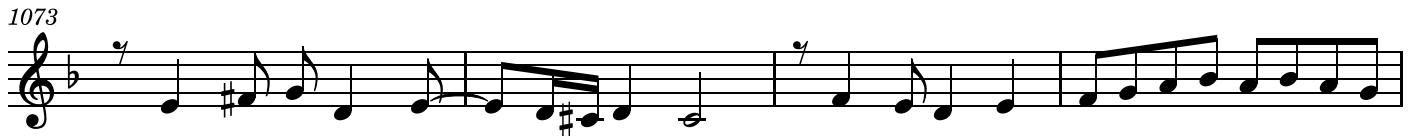
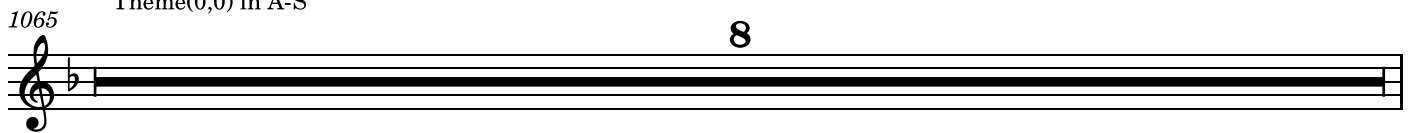
No.38 Variation-36 イエスの死

Theme(1,0) in B (Phrygian mode)



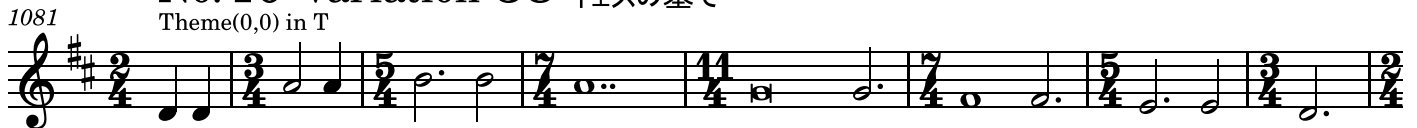
No.39 Variation-37 神の子羊(Agnus Dei)

Theme(0,0) in A-S



No.40 Variation-38 イエスの墓で

Theme(0,0) in T



No.41 Variation-39 復活のプレリュード(Prelude)

1105

Theme(1,0) in B



1109



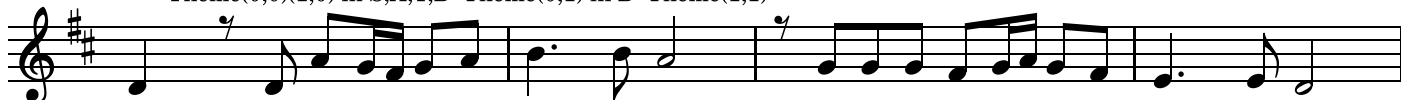
1113



No.42 Variation-40 復活のフーガ

1117

Theme(0,0)(1,0) in S,A,T,B Theme(0,1) in B Theme(1,1)



1121



1125

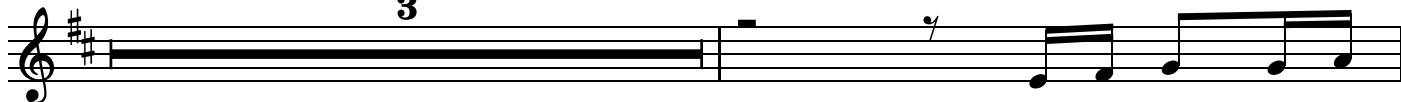


1129



1134

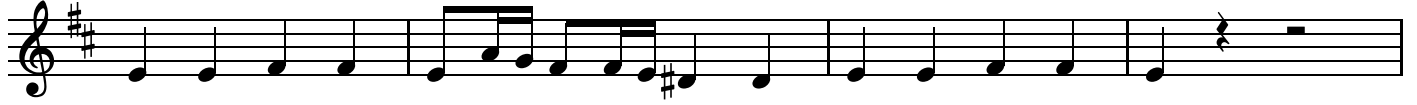
3



1138



1142



1146 **24**



1172



1177



1181



1185





1219

4



1223



1227

