

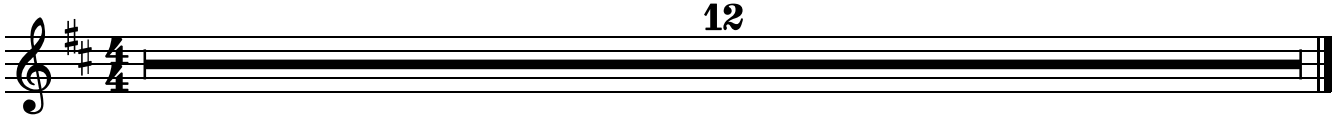
Choral Variations on "Twinkle, twinkle, little star" ♪
キラキラ星変奏曲 Version 2.0.6

Original melody: French folk song
Lyrics/Variations: Shigeharu Matsuo

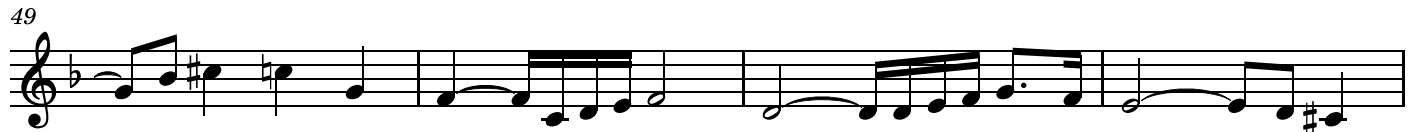
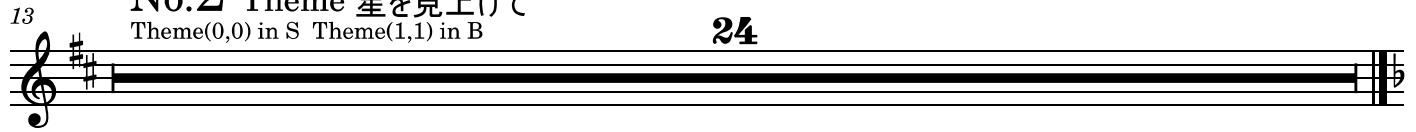
- The Life of Jesus Christ sung with theme and 1 + 40 variations -
~ 主題と1+40の変奏で歌い綴るイエス・キリストの足跡 ~

Horn

No.1 Variation-0 小シンフォニア(Sinfonia)
Theme(0,0) in B



No.2 Theme 星を見上げて
Theme(0,0) in S Theme(1,1) in B



61 24

85 40

No.6 Variation-4 マリアの讃歌 (Magnificat)
 Theme(0,0)(0,1)(1,0)(1,1) in B and most of other parts

125 40 48 8

221 8 8 24 28

No.7 Variation-5 ベツレヘムへの旅路
 Theme(0,0) in T,,

289 26

315 34

349 24

No.10 Variation-8 羊飼いへの良き知らせ
 Theme(0,1) in B

373 12

No.11 Variation-9 天使の讃美 (Gloria)

Theme(0,0) in S,A,T,B Theme(1,1) in B

385 **13**

400

403 **4**

410 **31**

445

449 **12**

461 **16**

477 **12**

489 **12**

501 **24**

525 **32**

557 **16** **6** **26**

605 **32**

637 **24**

661 **32**

No.23 Variation-21 イェスにすぎる2人のカノン
Theme(0,0) in S/A Canon

693 **6** **8**

707 **12** **12**

No.25 Variation-23 ダビデの子、ホサナ
Theme(0,0) in B,S

731 **32**

No.26 Variation-24 ヲダの裏切り
Theme(1,0) in S, Theme(0,0) in B

763 **12**

No.27 Variation-25 ゲッセマネの祈り
Theme(1,0) in B

775 **32**

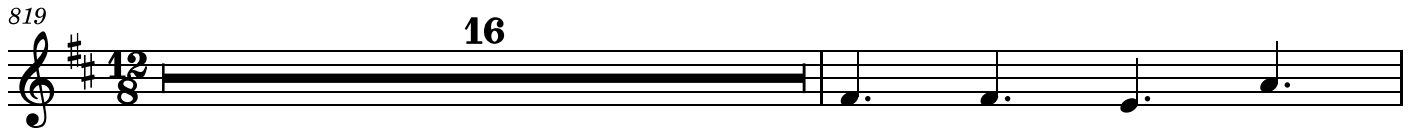
No.28 Variation-26 イエス捕われる
Theme(0,0) in S

807

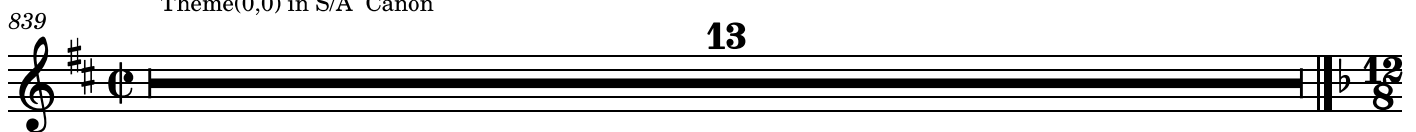
810

813

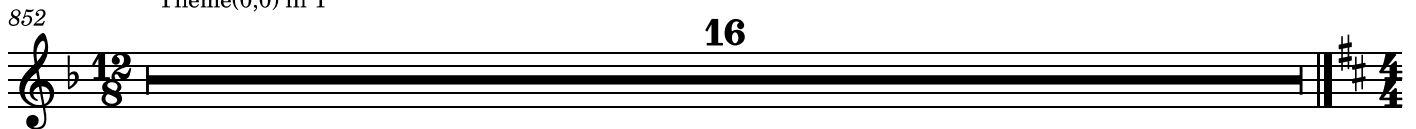
816 **12**



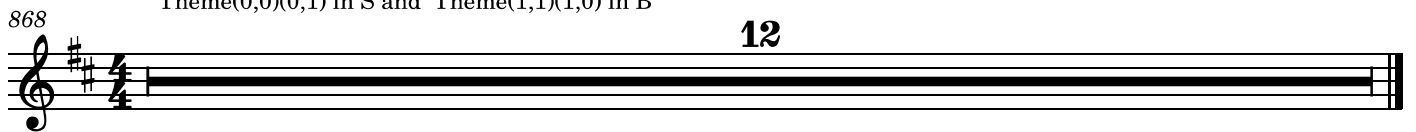
No.30 Variation-28 ペト口に迫る人々のカノン
Theme(0,0) in S/A Canon



No.31 Variation-29 ペト口の改悛
Theme(0,0) in T



No.32 Variation-30 シンメトリーなアリア(言葉と音楽の回文)
Theme(0,0)(0,1) in S and Theme(1,1)(1,0) in B

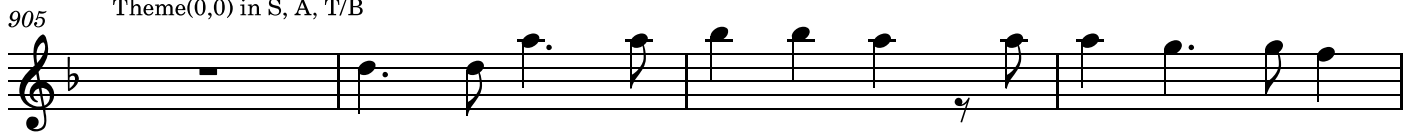


No.33 Variation-31 法廷
Theme(0,0) in B





No.34 Variation-32 猛る群衆のカノン
Theme(0,0) in S, A, T/B



No.35 Variation-33 兵士らイエスをなぶり

Theme(0,0) in S, A, T, B and Tonality change

921

924

927

930

932

934

936

No.36 Variation-34 十字架へのプレリュード

Theme(1,1) in B

938

24

1049 **No.38 Variation-36** イエスの死
Theme(1,0) in B (Phrygian mode) **16**

1065 **No.39 Variation-37** 神の子羊(Agnus Dei)
Theme(0,0) in A-S **16**

1081 **No.40 Variation-38** イエスの墓で
Theme(0,0) in T

1086

1091

1096

1101

1105 **No.41 Variation-39** 復活のプレリュード(Prelude)
Theme(1,0) in B **12**

1117 **16**

1135 **33**

1171 **24**

1198 **8**

1210

1214

1217

1219 **8**