

Choral Variations on "Twinkle, twinkle, little star" ♪

# キラキラ星変奏曲 Version 2.0.5

- The Life of Jesus Christ sung with theme and 1 + 40 variations -

～ 主題と1+40の変奏で歌い綴るイエス・キリストの足跡 ～

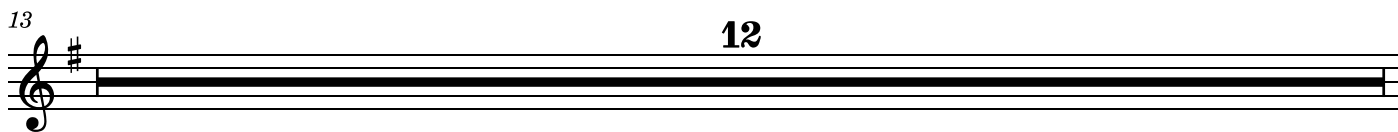
Oboe

## No.1 Variation-0 小シンフォニア(Sinfonia)

Theme(0,0) in B

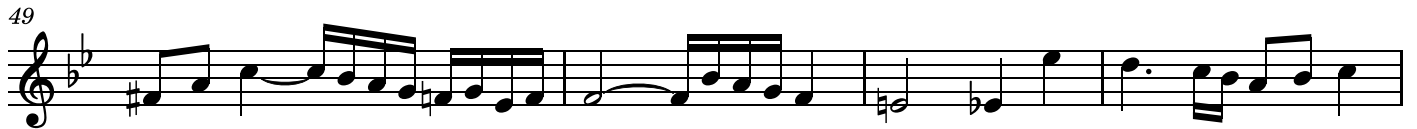


## No.2 Theme 星を見上げて

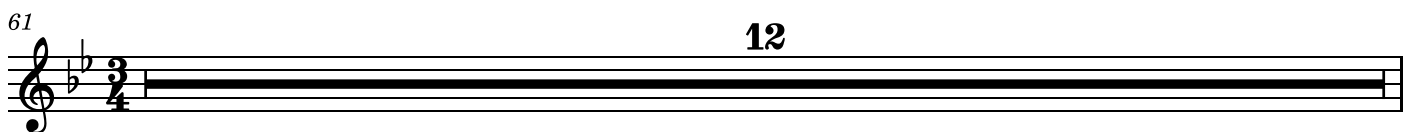


## No.3 Variation-1 大いなる光

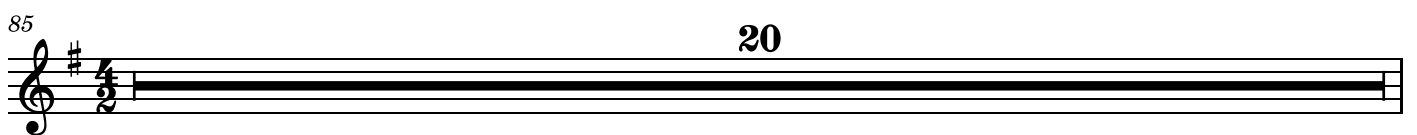




## No.4 Variation-2 待降のキャロル



## No.5 Variation-3 みっかい告げる(受胎告知)



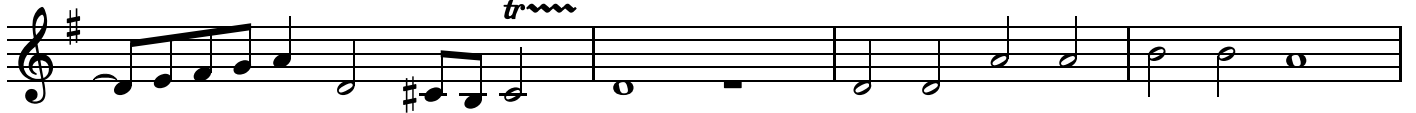
109



112



115



119



122



## No.6 Variation-4 マリアの讃歌 (Magnificat)

125



131



137



143



149



155



161



166



172



178



184



190



Musical notation for measure 190, starting with a treble clef and a key signature of one flat (B-flat). The notation includes quarter notes, eighth notes, and a quarter rest.

196



Musical notation for measure 196, starting with a treble clef and a key signature of one flat (B-flat). The notation includes dotted notes, eighth notes, and quarter notes.

202



Musical notation for measure 202, starting with a treble clef and a key signature of one flat (B-flat). The notation includes dotted notes, eighth notes, and quarter notes.

208



Musical notation for measure 208, starting with a treble clef and a key signature of one flat (B-flat). The notation includes eighth notes, quarter notes, and a double bar line with a key signature change to three flats (E-flat major/C minor).

213



Musical notation for measure 213, starting with a treble clef and a key signature of three flats (E-flat major/C minor). The notation includes eighth notes, quarter notes, and a double bar line.

218



Musical notation for measure 218, starting with a treble clef and a key signature of three flats (E-flat major/C minor). The notation includes eighth notes, quarter notes, and a double bar line.

223



Musical notation for measure 223, starting with a treble clef and a key signature of three flats (E-flat major/C minor). The notation includes eighth notes, quarter notes, and a double bar line.

229



Musical notation for measure 229, starting with a treble clef and a key signature of three flats (E-flat major/C minor). The notation includes eighth notes, quarter notes, and a double bar line.

235

240

246

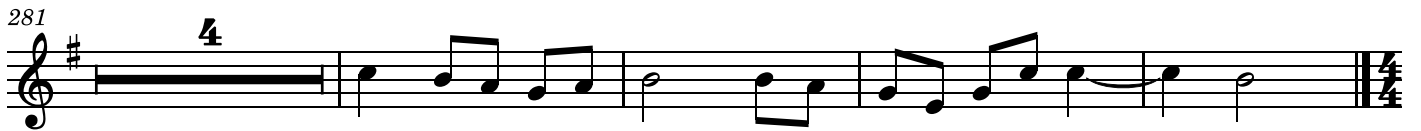
252

258

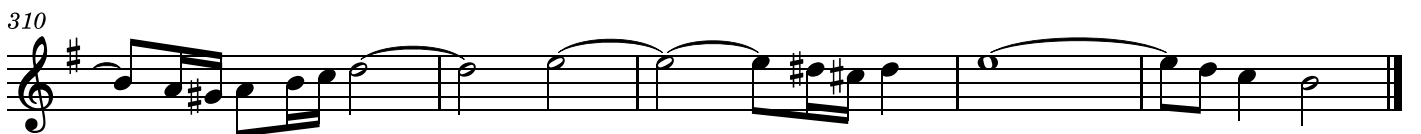
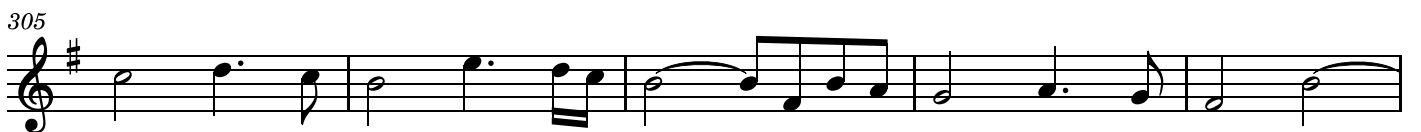
263

269

275



No.7 Variation-5 ベツレヘムへの旅路



No.8 Variation-6 ベツレヘムの馬小屋で(イエスの誕生)



339

### No.9 Variation-7 羊飼いのカノン

349

351

352

355

358

361

363



364



367





### No.10 Variation-8 羊飼いへの良き知らせ

Theme(0,1) in B



### No.11 Variation-9 天使の讃美 (Gloria)



403



406



416



421



427



433



438



443

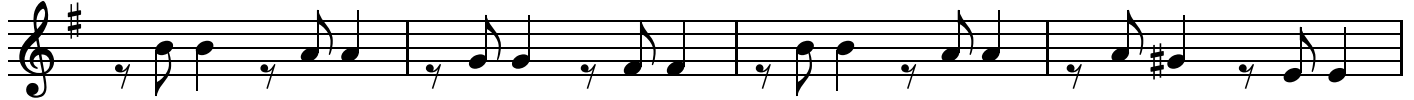


## No.12 Variation-10 馬屋に逃げ！

449



453



457



## No.13 Variation-11 みどり子イエスの子守歌

461



467



472



477

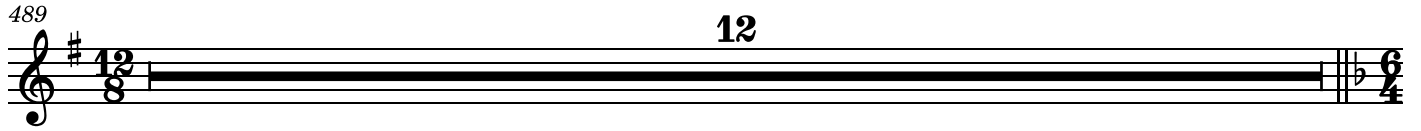


## No.14 Variation-12 洗礼者ヨハネ

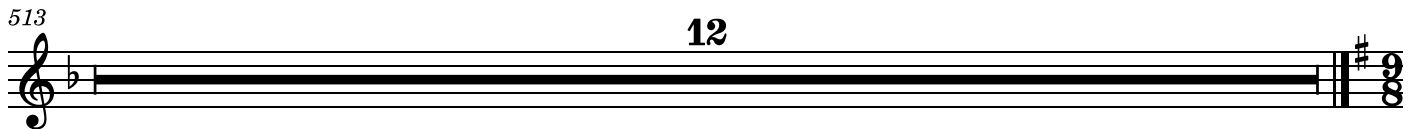
483



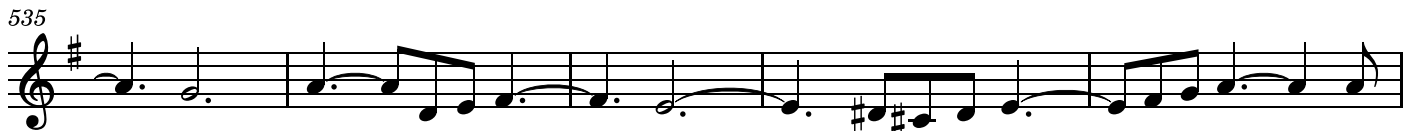
## No.15 Variation-13 鳩のように(イエスの洗礼)

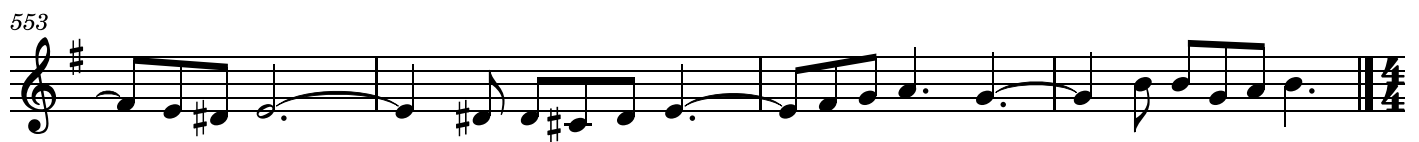


## No.16 Variation-14 イエスの弟子



## No.17 Variation-15 カナの婚礼

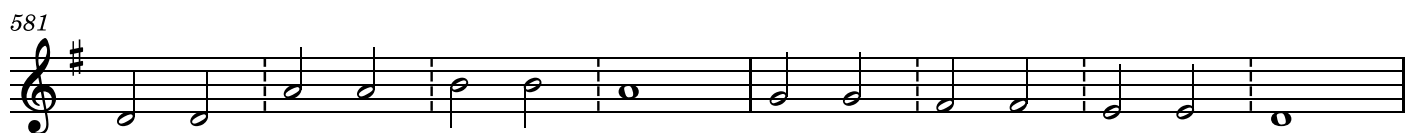
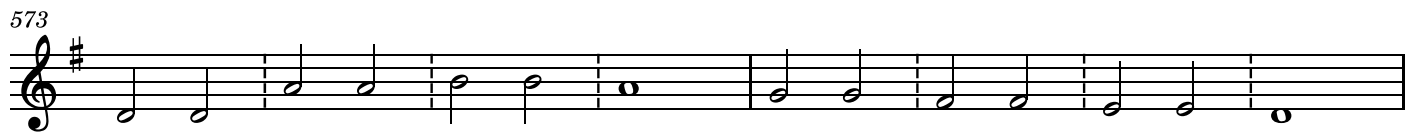




### No.18 Variation-16 イエス山に登る



### No.19 Variation-17 山上のイエスの言葉



597



## No.20 Variation-18 疲れた者、重荷を負うもの

605



613



621



629



## No.21 Variation-19 イエス湖上を歩く

637



643



649





## No.22 Variation-20 ラザロの死と甦り



## No.23 Variation-21 イエスにすぎる2人のカノン





703



## No.24 Variation-22 エルサレムに向かうPrelude

707



713



719



725



## No.25 Variation-23 ダビデの子、ホサナ

731



736



742





## No.26 Variation-24 ユダの裏切り



## No.27 Variation-25 ゲッセマネの祈り

Theme(1,0) in B



799



## No.28 Variation-26 イエス捕われる

807



810



815



## No.29 Variation-27 大祭司の前で

819



823



827



831



835



## No.30 Variation-28 ペト口に迫る人々のカノン

839



844

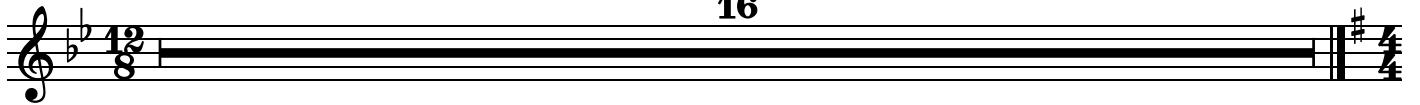


848



## No.31 Variation-29 ペト口の改悛

852



16

## No.32 Variation-30 シンメトリーなアリア(言葉と音楽の回文)

868



874



## No.33 Variation-31 法廷

880



886



キラキラ星変奏曲 Ver.2.0.5 主題と1+40の変奏 2022/4/27-2024/2

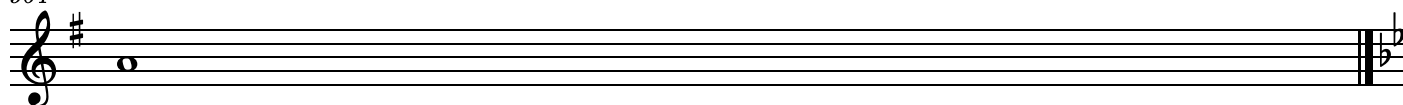
892



898



904

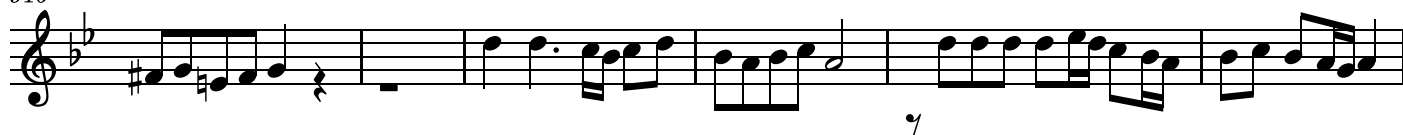


### No.34 Variation-32 猛る群衆のカノン

905



910



916



### No.35 Variation-33 兵士らイエスをなぶり

921



924



927

930

932

935

### No.36 Variation-34 十字架へのプレリユード

938

**23**

### No.37 Variation-35 十字架のフーガ

962

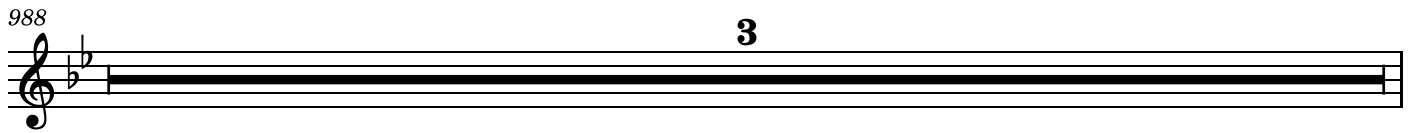
**8**                      **4**

976

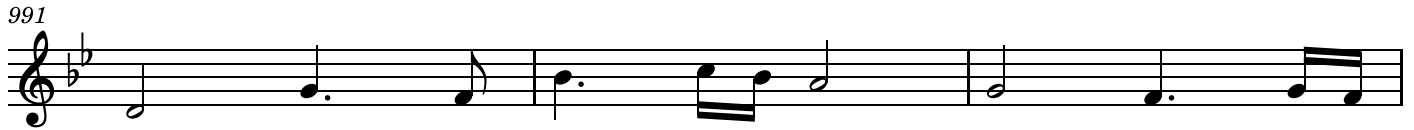
980

**5**

988 **3**



991



994



998



1002



1006

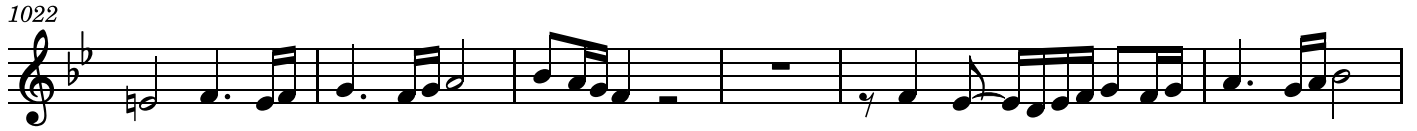


1011

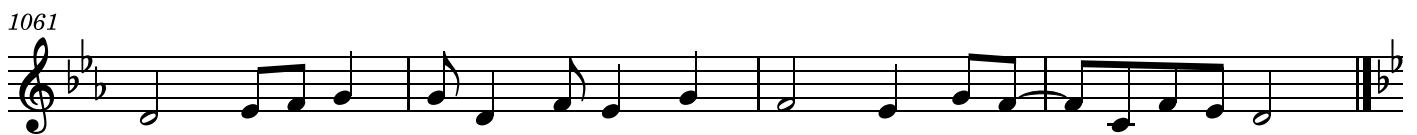
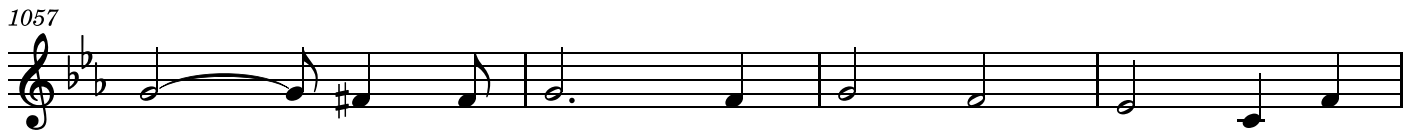


1017





### No.38 Variation-36 イエスの死

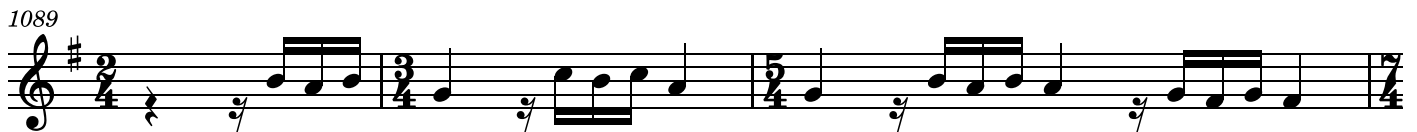




## No.39 Variation-37 神の子羊(Agnus Dei)



## No.40 Variation-38 イエスの墓で



1094



1097



1101

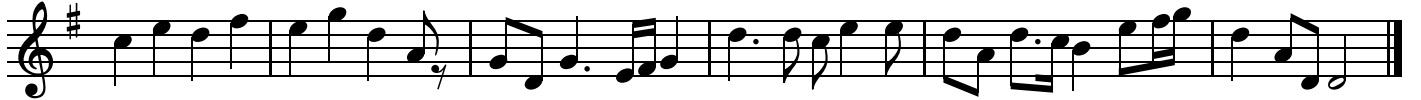


## No.41 Variation-39 復活のプレリュード(Prelude)

1105



1111



## No.42 Variation-40 復活のフーガ

1117

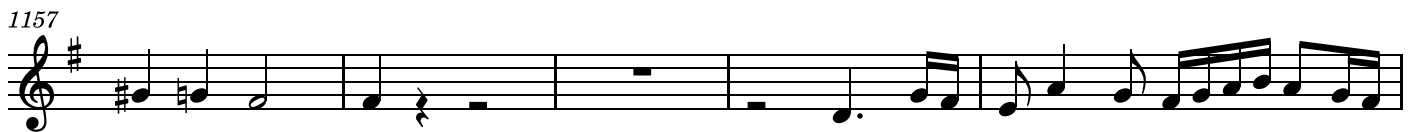
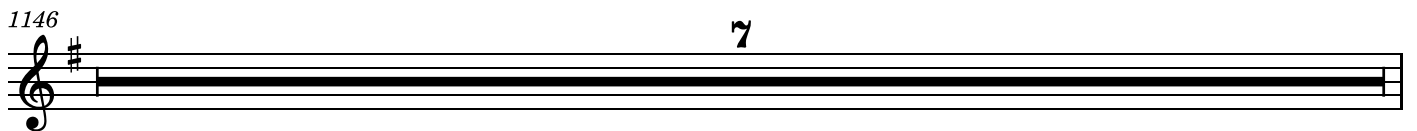


1125



1129





1172

1177

1182

1187

1192

1199

1203

1207



### No.43 Theme 再び星を見上げて

